

Wireless BLE All-in-One Ultrasonic Fuel Level Sensor

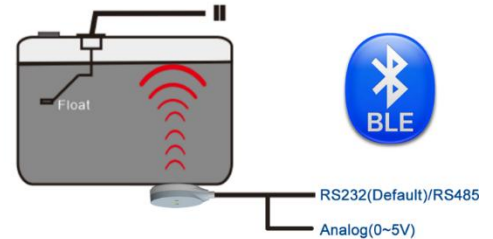
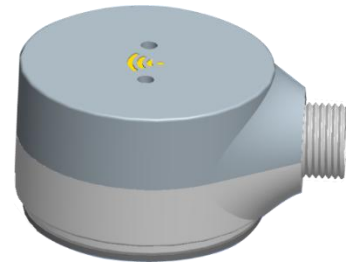
for Fleet Fuel Monitoring/Telematics

Fuel thefts Monthly Fuel Cost Fleet Efficiency

↓90% **↓15%** **↑30%**

Features & Specification:

- No Drilling Holes in Tank, Easy Installation
- Support Any Liquid: Diesel, Gasoline, Water, etc.
- Support Any Material Tank: Metal/Aluminum/Stainless Steel /Fiber/Plastic
- **Resolution:** 0.1mm
- **Accuracy:** 99.5%
- **Maximum Measuring Range:** 100cm (UL212), 250cm (UL212-E)
- **Lowest Detection High(Blind Area):** 3cm
- **Maximum Tank Thickness:** 8~12mm
- **Output Interface:** BLE Bluetooth 5.0 +RS232(Default)/RS485+Analog(0~5V)
- **Mobile App configuration &Calibration**
- **Built-in AI Algorithm to filter abnormal signal**
- **Fuel Theft Alarm I/O Output**
- IP68 waterproof
- Hardware Partners: Teltonika, GEOTab, Calamp, Wireless Link, Queclink, Gosafe, Jimi Concox, Meitrack, Streamax



Model	Maximum Range	Blind Area	Beam Range	BLE Bluetooth	Signal Output	Voltage	EXW Price	
							Order Qty	Unit Price(US\$)
UL212	100 cm	3cm	11°	Yes	RS232/RS485, Analogue (0~5V)	9~80V DC	<100pcs	55
							100+pcs	49
							500+pcs	45
UL212-E	250 cm	3cm	11°	Yes	RS232/RS485, Analogue (0~5V)	9~80V DC	<100pcs	79
							100+pcs	75
							500p+pcs	69

Tips for Placing Orders:

Model	Part Number/SKU	Description
UL212	UL212-RS232-B	1 meter range, RS232 interface + Analog Output
	UL212-RS232-BN	1 meter range, RS232 interface ONLY
	UL212-RS485-BN	1 meter range, RS485 interface ONLY
	UL212-51-BN	1 meter range, iBeacon protocol broadcasting, with RS232 interface
UL212-E	UL212-E-RS232-B	2.5 meter range, RS232 interface + Analog Output
	UL212-E-RS232-BN	2.5 meter range, RS232 interface ONLY
	UL212-E-RS485-BN	2.5 meter range, RS485 interface ONLY

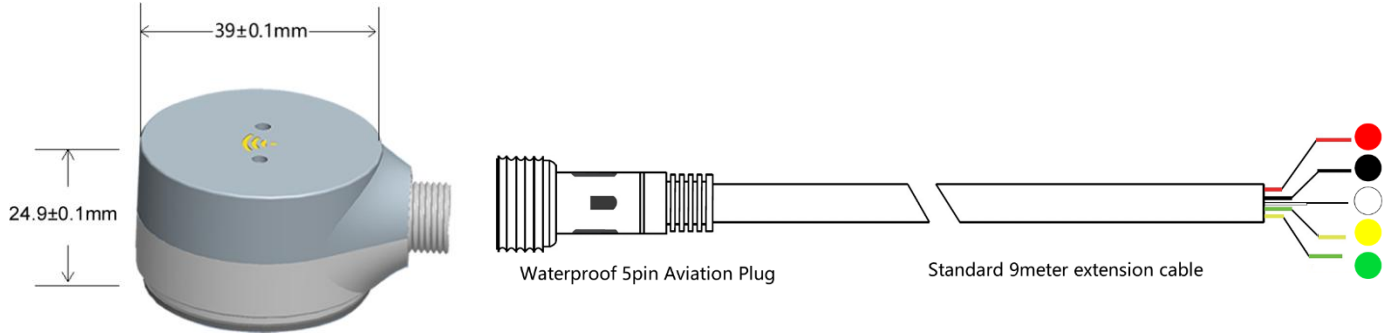
1. Introduction

- New Edge Bluetooth BLE All-in-One Ultrasonic Fuel Level sensor will use non-contact technology to detect fuel level without drilling holes.
With the ultrasonic reflection feature when cross liquid to air, it can read accurate fuel level height.
- PPS(Phenylenesulfide) Plastic Housing, Anti-Corrosion/Strong Acid, Anti-Fire, and support Max300~400°C
- Built-in BLE Bluetooth Module, Sync with RS232/RS485 & Analog output.
- Fuel Theft Alarm & Refueling Alarm Output

2. Electronic Specification

Parameter	Description
Power Supply	9~80V DC
Max Power Consumption	0.7W @12V DC
Measuring Range	3~250cm
Resolution	0.1mm
Accuracy	99.5% (0# Diesel ,25°C)
Maximum Tank Thickness	<12mm
Interface	RS232 (default) /RS485 Analog 0~5V BLE Bluetooth5.0
Serial Communication	9600 baud rate(customized), data bit 8, stop bit1, no flow control, no verification bit
Support Protocols	Teltonika, GEOTAB, BCE, Ruptela, Ominicomm LLS, CR, Calamp, Atrack, Fifotrack, Queclink, Meitrack, Concox Jimi, Queclink, Xirgo,Wireless Link
Extension Cable	9 meters
Working Temperature	-40~85°C (@1 ATM)
Working Humid	5~99%
Explosion-proof Class	Exd II CT5
Waterproof	IP68

3. Size



Cable	Definition	Remarks
Red	Power Supply 9~80V DC+	
Black	Power GND, RS232/RS485 GND	
Yellow	RS232 TX (Default), or RS485B	Connect GPS/DVR RS232_RX, Or RS485B
White	RS232 RX (Default), or RS485A	Connect GPS/DVR RS232_TX, Or RS485B
Green	Analog Output 0~5V	

4. Approved M2M & DVR Brands:



Recommended GPS Tracker that can work with our ultrasonic fuel sensor:

- Tenet: TA9-4G, TA7-4G, TA7-2G
- Teltonika: FMB640, FMB630, FMB125 (**Private Protocol**)
- GEOTab: GO7, GORUGGED (**Private Protocol**)
- Queclink: GV200, GV200G, GV300 (**Private Protocol**)
- Meitrack: T336, T333, MVT380, T1, MVT600, MVT800 (**Private Protocol**)
- Calamp: LMU-2000, LMU-2100, LMU-2600, LMU-2700 Series.
- Concox Jimi : GT06E ,X3 (**Private Protocol, must work with TTL to RS232 adapter cable**)

Besides Brand above, we also support some new models from Topflytech, Topshine, Jimi, Streamax, Icarvision, Richmore, Easy-Storage, Citops, Howen with difference HardWare. Please ask our salesman or the partners to confirm before orders.

5. Mobile APP via BLE connection

