

T6 Pro Z-Wave Programmable Thermostat User Guide



**TH6320ZW2003 depicted. Other models may vary.
Actual size 4.09" x 4.09" x 1.06"*



Welcome

This user guide is designed to help you get acquainted with your new T6 Pro Z-Wave thermostat. Check out the table of contents on page 2 to browse by topic.

Need help? Get in touch.

Web: yourhome.honeywell.com/

Phone: 1-800-468-1502

Social: Twitter: @HoneywellHome, Facebook: Honeywell Home



33-00296EFS-01

Table of contents

Thermostat features	3
Thermostat overview	4
Basic thermostat operation	
Adjusting the temperature	4
Program schedule overrides.....	5
Adjusting the temperature in Auto mode	6
Selecting system mode.....	7
Built-in compressor protection	8
Setting the fan	8
Main menu settings	
Z-Wave setup.....	9
Z-Wave connection status.....	10
Main menu overview.....	11
Scheduling options	12
Setting a schedule.....	13
Reset schedule	14
Screen lock settings.....	14
Adjusting backlight brightness	15
Enabling/disabling Adaptive Intelligent Recovery.....	15
Setting the time and date.....	16
Cleaning the thermostat screen.....	16
Choosing Fahrenheit or Celsius	17
Viewing equipment status	17
Viewing thermostat information.....	18
Battery replacement.....	19
Alerts and maintenance reminders	20
Appendices	
Troubleshooting.....	22
5-year warranty.....	23
General system information	24
Regulatory information	24

Thermostat features

The Honeywell T6 Pro Z-Wave Programmable Thermostat is a Z-Wave Plus certified thermostat designed to work with any Z-Wave compliant controller or gateway for easy programming and automation to deliver energy savings and comfort at the same time. When integrated with the app that controls your Z-Wave controller, it lets you program and control your home's HVAC system as well as control other Z-Wave devices connected to the same Z-Wave controller.

Smart Scheduling: You can choose whether you want the thermostat to follow just Home/Away temperature triggered by your Z-Wave controller or if home, whether you want to differentiate between Home/Sleep temperature.

The T6 Pro Z-Wave thermostat can also work as regular programmable thermostat when disconnected from your Z-Wave network. You can program a schedule where every day is different or a schedule where weekdays and weekends are different with four periods per day.

Displays ambient air temperature, % relative indoor humidity and reports HVAC system status: You can display actual temperature or % relative humidity, or to see whether your cooling / heating system is running.



Auto change from heat to cool: When Auto mode is selected, the T6 Pro Z-Wave thermostat can automatically determine whether your home needs heating or cooling to reach the desired temperature at the right time.



Smart Alerts: The T6 Pro Z-Wave thermostat can alert you when your HVAC system is not working properly and can remind you for things like when to change your furnace filter.



Adaptive Intelligent Recovery: The T6 Pro Z-Wave thermostat learns your heating and cooling cycle times to make sure the system delivers the temperature you want, when you want it.

Thermostat overview

Desired temperature

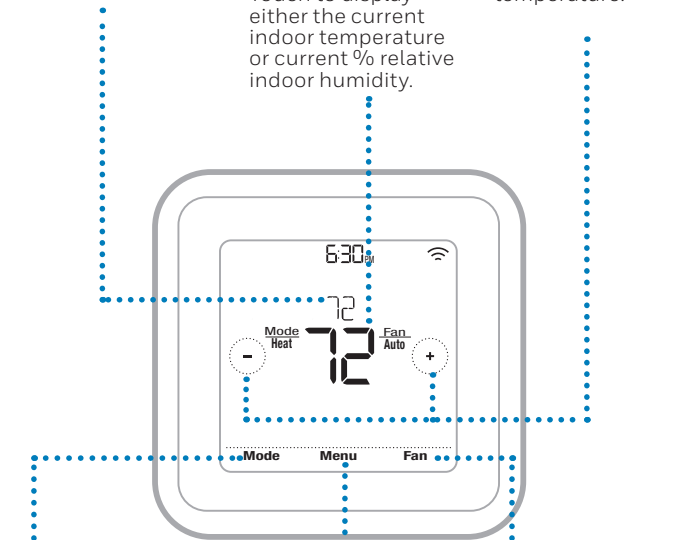
Shows desired indoor temperature.

Indoor Temperature/ % Relative Indoor Humidity

Touch to display either the current indoor temperature or current % relative indoor humidity.

Adjust temperature

Touch **+** or **-** to set your desired temperature.



Mode

Touch to select system mode:

- Auto (if enabled)
- Heat
- Cool
- Off
- Em Heat (Emergency Heat)

Menu

Touch to program a schedule and see other customizable options.

Fan

Touch to select fan mode:

- Auto
- On
- Circulate

Adjusting the temperature

To adjust the desired temperature up or down, touch **+** or **-** on the thermostat home screen.

How long the change will be held depends on whether your thermostat is included or excluded in Z-Wave network and what schedule type is selected.



Program schedule overrides

If the thermostat is included in Z-Wave network it typically follows the setting on your Z-Wave controller. If you adjust the temperature setpoint, it overrides the current setpoint until away state or new temperature setpoint is received from Z-Wave controller. Setting of Hold until time and Permanent hold (see below) will not be available on the thermostat screen.

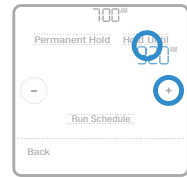
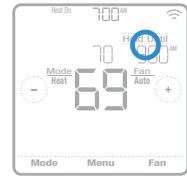
If the thermostat is not included in the Z-Wave network and the thermostat is following time based schedule, you can set what time the new temperature setpoint will be held until or you can hold the new setpoint permanently.

There are several scheduling options available for the thermostat. For more information go to page 12.

Program schedule override (temporary)

- 1 Touch **+** or **-** on the thermostat home screen to set your desired temperature. Hold **Hold Until** will appear together with the time the hold will end.
- 2 To change when the hold will end, touch the time and wait until the time starts blinking. Then, touch **+** or **-** to set when you want the hold to end. Touch **Hold Until** once more to confirm changes and return to the home screen.

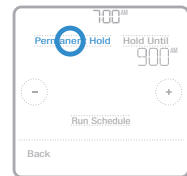
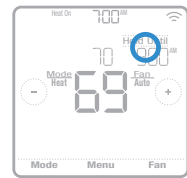
After the hold period ends, the thermostat will automatically return to the program schedule. If you want to cancel the hold, touch **Hold Until** and then touch **Run Schedule**.



Program schedule override (permanent)

- 1 Touch **+** or **-** on the thermostat home screen to reach your desired temperature. **Hold Until** will appear together with the time you want the hold to end.
- 2 Touch **Hold Until**. Permanent Hold will appear on screen. Touch **Permanent Hold** to hold this temperature until you manually change it.

To end permanent hold and return to the program schedule, touch **Permanent Hold** and then touch **Run Schedule**.

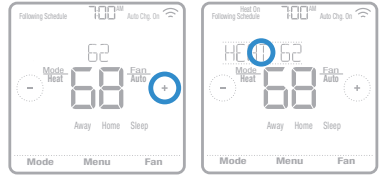


Adjusting the temperature in Auto mode

Auto mode (when the thermostat automatically chooses heating or cooling to reach your desired temperature) is disabled by default. If your heating or cooling professional enabled it, you'll see Auto appear as an option under Mode on the thermostat home screen.

To choose your preferred temperatures for both heating and cooling in Auto mode, follow the steps below.

- 1 Touch **Mode** on the thermostat home screen until Auto appears. Then touch **+** or **-** to choose your preferred temperature for the mode that's currently active (heating or cooling).
- 2 Next, touch the text area where the active mode is displayed to switch to the inactive mode.
- 3 Touch **+** or **-** to choose your preferred temperature in the other mode. After 5 seconds of inactivity, your setting will take effect, and the thermostat screen will show the set point of the active mode.



Selecting system mode

Current system mode (Heat, Cool, Off, Em Heat) is displayed to the left of current indoor temperature on the thermostat home screen.

The mode that's currently running (Heat On, Cool On, Em Heat On) is displayed in the upper-left corner of the thermostat home screen.

To cycle through the available modes, touch **Mode** on the thermostat home screen and select the appropriate mode for your desired temperature.

- **Heat:** Controls the heating system.
- **Cool:** Controls the cooling system.
- **Off:** Turns the heating and cooling systems off.
- **Auto:** When enabled, the thermostat will automatically use heating or cooling to reach the desired temperature.
- **Em Heat:** Controls auxiliary or emergency heat; only available on systems with a heat pump.

Notes:

- Em Heat and Auto modes may not appear on the thermostat screen depending on your equipment and how your thermostat was installed.
- Em Heat is only available for heat pump systems. The thermostat must also be configured to control a heat pump and an auxiliary/emergency heat stage.
- When Auto mode is selected, Auto Chg. On will appear in the upper-right corner of the thermostat home screen, and the active mode (Heat or Cool) will display under Mode. To set your temperature preferences in Auto mode, see page 6.



Built-in compressor protection

If the compressor is restarted too soon after a shutdown, system damage can occur. The built-in compressor protection feature forces the compressor to wait a few minutes before restarting, helping to prevent damage to the heating or cooling system.

During the brief wait period, the thermostat will flash Cool On (or Heat On if you have a heat pump) until the wait period is over, at which point the compressor will turn back on.

Note: The flashing Cool On or Heat On message is also used for startup delay protection if AC power loss occurs.



Setting the fan

Touch **Fan** on the thermostat home screen to cycle through available fan modes until the desired mode is displayed. Your changes will save automatically.

Available fan modes:

- **On:** The fan will run continuously.
- **Auto:** The fan will run only when the heating or cooling system is on.
- **Circ:** The fan will run at random intervals at least 35% of the time to keep air circulating throughout your home.



Z-Wave setup

To include or exclude the thermostat from Z-Wave network, go to thermostat **MENU/Z-WAVE SETUP**.

- Touch **Select**. You will be asked to set your primary controller to **INCLUDE MODE**. Please refer to the user manual of your Z-Wave controller.
- After inclusion procedure has been initiated on your Z-Wave controller, touch **Select** on the thermostat.
- If the inclusion procedure is successful, **"INCLUDED"**, the node ID, and the Z-Wave connected status icon appear on the screen. If the procedure fails, **"FAILED TO INCLUDE"** appears on the screen.
- Your controller will indicate whether the thermostat was successfully added to its network. (Please refer to the user manual of your Z-Wave controller.)



NOTES:

- Before adding the thermostat to a Z-Wave network, check that it does not already belong to one. If the thermostat is included in Z-Wave network, it offers to exclude. If the thermostat is excluded from Z-Wave network, it offers to include. You can also check the status by viewing the **Node ID** located in the thermostat **MENU/DEVICE INFO**. An excluded thermostat should show zero for the Node ID (000).
- Whether you are including or excluding thermostat from your Z-Wave network, first you have to initiate it on your Z-Wave controller. Please refer to the user manual of your Z-Wave controller.
- For other specific tasks, such as adding the thermostat to home automation scenes or groups, refer to the Z-Wave controller instructions.
- The T6 Pro Z-Wave thermostat works in the optional Z-Wave battery mode or normal power mode based on its power source. The Z-Wave power mode can only be changed when thermostat is **NOT** included in Z-Wave network. You can check the power mode in the thermostat menu under **MENU/DEVICE INFO**.
- If 24 VAC power source is not used or available, the thermostat must be powered by batteries. The thermostat will operate in LSS mode (power-save, sleep mode) to help conserve battery life after it has been included in a Z-Wave network. The Z-Wave radio supports beaming. It allows other devices in the network to wake up the Z-Wave thermostat, accept commands, and then go back to sleep.
- If you need the thermostat to operate AOS mode (always listening mode) to act as signal repeater and to increase network reliability, you need to ask your professional installer to power the thermostat by 24 VAC.

Z-Wave connection status

Z-Wave connection status is located in the upper-right corner of the screen.



- Thermostat is included and connected to a Z-Wave network.
- Thermostat is excluded from a Z-Wave network.
- Thermostat is either included in a Z-Wave network but the Z-Wave signal is lost, or is included but AC power is lost (battery used as backup). In this case, Z-Wave radio is turned off to preserve battery life. AC power must be restored or you have to change the power mode. It can be done via excluding thermostat from Z-Wave network and including again in battery power mode where batteries are used as main power source. You can check the actual power mode in the thermostat

MENU/DEVICE INFO.



Example of thermostat included and connected in a Z-Wave network.

Main menu overview

Touch **Menu** on the thermostat screen and then use the  or  arrows to page through the following options.

SCHEDULE

Create and edit a schedule for your thermostat to follow. (Available to edit only if time based schedule or smart schedule is configured.)

AWAY SETTING

Set energy saving temperature setpoints for when you are away. (Available if thermostat is included in Z-Wave network.)

SCREEN LOCK

Lock the screen to limit access to thermostat settings.

Z-WAVE SETUP

Include or exclude the thermostat from Z-Wave network.

BRIGHTNESS

Set the brightness of an inactive backlight. (Available if the thermostat is powered by 24 VAC.)

RECOVERY

Enable or disable the Adaptive Intelligent Recovery feature.

CLOCK / DATE

Manually set the clock, clock format and daylight saving time in the **CLOCK** sub-menu, and date in the **DATE** sub-menu.

CLEAN SCREEN

Disable the touchscreen for 30 seconds so you can clean it.

TEMP SCALE

Choose Fahrenheit or Celsius.

RESET

Schedule: Resets to the default Monday-Friday, Saturday-Sunday schedule.


EQMP STATUS

View current status of your heating or cooling equipment.

DEVICE INFO

View your thermostat's device information, such as Z-Wave power mode, Z-Wave node, home ID, and model number.

ALERTS

View, snooze or dismiss active alerts and reminders (available only when you see the active alert symbol  on the thermostat home screen).

Navigating the menus

Menu: Touch to access all options and sub-menus.

 or : Touch to page through options and sub-menus.

 or : Touch to adjust things such as temperature, time and date.

Back or **Cancel:** Touch to discard changes or go back to the previous menu.

Select: Touch to access a sub-menu.

Done: Touch to confirm selection.

Tip: You can touch **Select** to access a sub-menu, or you can touch the text in the message area (the word SCHEDULE, for example).

Scheduling options

The T6 Pro Z-Wave thermostat offers flexible scheduling. The options available differ depending on whether the thermostat is included/excluded from Z-Wave network.

- | | |
|------------------------------|-----------------------------------|
| 1 No schedule | 3 Occupancy based schedule |
| 2 Time based schedule | 4 Smart schedule |

If the thermostat is not included in Z-Wave network:

The thermostat can be set as non-programmable (1), or you can program and follow a Time based schedule (2) based on the time of day or day of the week.

The default program schedule is 5-2 (Mon-Fri; Sat-Sun), with different settings for weekdays and weekends, four time periods per day. See the table below for the default settings, which have adjustable periods and temperature setpoints.

Time based schedule:					
Period	Start Time	Heat (Mon-Fri)	Cool (Mon-Fri)	Heat (Sat-Sun)	Cool (Sat-Sun)
Wake	6:00 AM	70 °	78 °	70 °	78 °
Away	8:00 AM	62 °	85 °	62 °	85 °
Home	6:00 PM	70 °	78 °	70 °	78 °
Sleep	10:00 PM	62 °	85 °	62 °	85 °

If the thermostat is included in Z-Wave network:

It typically follows the settings of your Z-Wave controller. When not in Away mode, it can either follow your Home temperature setpoint based on occupancy states (Home/Away) sent by Z-Wave controller (3) or it can even differentiate between Home and Sleep temperature setpoints according to actual time period (4).

The default program schedule is the Smart schedule, 5-2 (Mon-Fri; Sat-Sun), with different settings for weekdays and weekends. See the table below for the default settings, which have adjustable periods and temperature setpoints.

Smart Schedule:					
Period	Start Time	Heat (Mon-Fri)	Cool (Mon-Fri)	Heat (Sat-Sun)	Cool (Sat-Sun)
Away	N/A*	62 °	85 °	62 °	85 °
Home	6:00 AM	70 °	78 °	70 °	78 °
Sleep	10:00 PM	62 °	85 °	62 °	85 °

To turn the Smart schedule off and to use just Occupancy based schedule (Home/Away temperature setpoints only) go to thermostat **MENU/SCHEDULE** and turn the Time based schedule off. See table below with default, adjustable temperature setpoints.

Occupancy based schedule:			
Period	Start Time	Heat	Cool
Away	N/A*	62 °	85 °
Home	N/A*	72 °	78 °

*Triggered by Z-Wave controller



NOTES (for when the thermostat is INCLUDED in Z-Wave network):

- Away mode is an Energy saving setback mode triggered by Z-Wave controller or gateway.
- Away setpoint is adjustable and common for all days, configurable in the thermostat **MENU/AWAY SETTING**.
- Home setpoint in the Occupancy based schedule is temperature setpoint adjustable on the thermostat Home screen. Common for all days.
- Home and Sleep setpoints in the Smart schedule are configurable in the thermostat **MENU/SCHEDULE**.

Schedule status

Active Time based schedule or Smart schedule is indicated by "Following Schedule" text in top left corner of the thermostat screen.



Schedule period

Shows current schedule period.

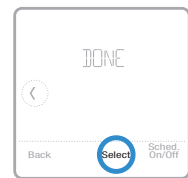
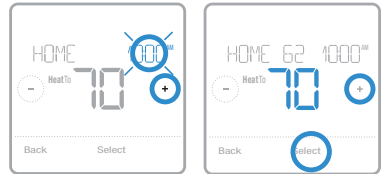
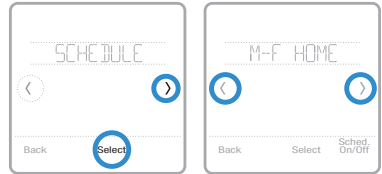
- Time-based schedule: Wake, Away, Home or Sleep.
- Smart schedule: Away, Home or Sleep.
- Occupancy based schedule: Away or Home.
- No schedule: Schedule periods are not displayed



Setting a schedule

To edit a schedule on the thermostat screen, follow the steps below.

- 1 Touch **Menu** on the thermostat home screen.
- 2 Touch the ⏪ or ⏩ arrows until you see SCHEDULE, then touch **Select**.
- 3 Touch the ⏪ or ⏩ arrows to select a period in a day or set of days, then touch **Select** on the period you want to edit.
- 4 Touch the time area, then touch + or - to adjust when the period starts. Touch **Select** to confirm.
- 5 Touch the temperature area, then touch + or - to adjust your preferred temperature for the mode that's currently active (either heating or cooling). Touch **Select** to confirm. Then touch + or - to adjust your preferred temperature for the inactive mode. Touch **Select** to confirm.
- 6 Edit the next period or use the ⏩ until you see **DONE**, then press **Select** to save changes and go to the home screen.



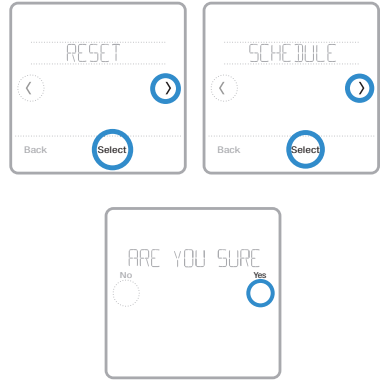
NOTES:

- Schedule menu is available only if time based schedule or smart schedule is configured.
- If not connected to Z-Wave network, Away setpoint is programmable for each day or group of days in **MENU/SCHEDULE**.
- If connected to Z-Wave network, Away setpoint is a common for all days, programmable in **MENU/AWAY SETTING**.

Reset schedule

To reset your schedule back to the default temperature setpoints (see page 12), follow steps below.

- 1 Touch **Menu** on the thermostat screen.
- 2 Touch the ◀ or ▶ arrows until you see RESET, then touch **Select**.
- 3 Touch the ◀ or ▶ arrows until you see SCHEDULE, then touch **Select**.
- 4 Touch **Yes** to confirm.



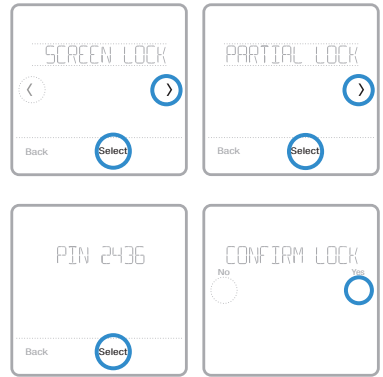
Screen lock settings

To prevent unauthorized access to the thermostat, or to limit changes to the system settings, there are two screen lock settings you can apply.

- **Partial lock:** Only the temperature can be changed.
- **Full lock:** No access is allowed without a PIN number.


Applying a screen lock setting

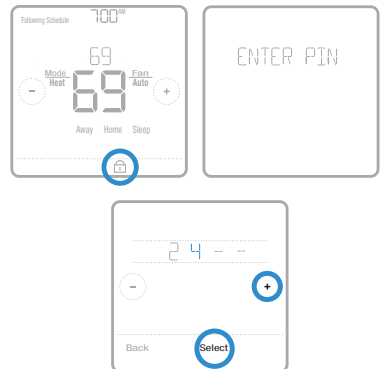
- 1 Touch **Menu** on the thermostat home screen.
- 2 Touch the ◀ or ▶ arrows until you see SCREEN LOCK, then touch **Select**.
- 3 Touch the ◀ or ▶ arrows to select your desired screen lock setting, then touch **Select**.
- 4 A PIN number will appear on screen. Write it down and keep it in a safe place.
- 5 Touch **Select**, and confirm your screen lock setting by touching **Yes**.



A partially or fully locked screen will be indicated by a lock symbol at the bottom of the thermostat screen.

Unlocking the screen

- 1 Touch the lock symbol  on the thermostat home screen.
- 2 When prompted to enter a PIN number, touch + or - to select the first number of the PIN code. Touch Select to confirm, and repeat for the remaining numbers.

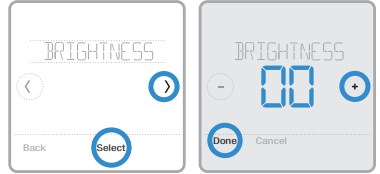


When you enter the correct PIN, you'll return to the thermostat home screen. To re-lock the screen after you're done making changes, follow the steps above to apply a lock setting.

Adjusting backlight brightness

When the thermostat is in idle mode, you can adjust how bright you'd like the screen. You can choose a brightness level from 00 (display backlight is off, which is the default) up to 05 (maximum brightness). To adjust backlight brightness, follow the steps below.

- 1 Touch **Menu** on the thermostat home screen.
- 2 Touch the ◀ or ▶ arrows until you see BRIGHTNESS, then touch **Select**.
- 3 Touch + or - to adjust the brightness level, which will change immediately.
- 4 Touch **Done** to confirm.

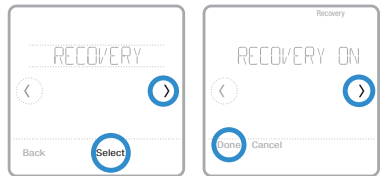


NOTE: This setting is only available if thermostat is powered by 24 VAC. This setting only applies to times when thermostat is not touched. When adjusting settings thermostat is always at full brightness.

Enabling/disabling Adaptive Intelligent Recovery

Over time, your T6 Pro Z-Wave thermostat will learn how long it takes your system to reach the desired temperature. It can then turn on your heating or cooling equipment at the right time to make sure your home is comfortable by the time you expect. This feature is enabled by default. To disable it, follow the steps below.

- 1 Touch **Menu** on the thermostat home screen.
- 2 Touch the ◀ or ▶ arrows until you see RECOVERY, then touch **Select**.
- 3 Touch the ◀ or ▶ arrows to select RECOVERY ON or RECOVERY OFF, then touch **Done** to confirm.



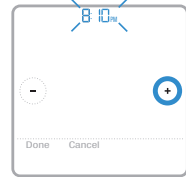
When Adaptive Intelligent Recovery is active, you'll see the recovery symbol in the upper-right corner of the thermostat screen.



Setting the time and date

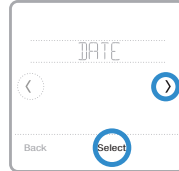
Setting the time

- 1 Touch **Menu** on the thermostat home screen.
- 2 Touch the ◀ or ▶ arrows until you see **CLOCK**, then touch **Select**.
- 3 Touch the ◀ or ▶ arrows until you see **SET TIME**, then touch **Select**.
- 4 Press + or - to set the time (or press and hold the buttons to move more quickly). Touch **Done** when finished.
- 5 Set clock format (12 hours or 24 hours) and daylight saving time in the same **CLOCK** sub-menu.



Setting the date

- 1 Touch **Menu** on the thermostat home screen.
- 2 Touch the ◀ or ▶ arrows until you see **DATE**, then touch **Select**.
- 3 Touch + or - to set the month, then touch **Select** to confirm.
- 4 Continue to set day and year in the same way. Touch **Select** to save your changes.



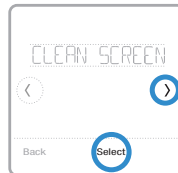
Cleaning the thermostat screen

With the clean screen option, you can lock the thermostat screen so you don't accidentally change your settings when you clean. Follow the steps below to activate clean screen mode.

- 1 Touch **Menu** on the thermostat home screen.
- 2 Touch the ◀ or ▶ arrows until you see **CLEAN SCREEN**, then touch **Select**.

The screen will deactivate for 30 seconds. A countdown timer will display the amount of time until screen reactivation.

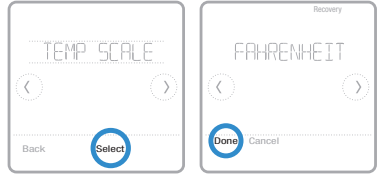
Tip: To clean the thermostat screen, spray water or household cleaner onto a cloth, then use the cloth to clean the screen. Avoid abrasive cleaners and do NOT spray liquid directly on the thermostat.



Choosing Fahrenheit or Celsius

To select a temperature scale, follow the steps below.

- 1 Touch **Menu** on the thermostat home screen.
- 2 Touch the ⏪ or ⏩ arrows until you see TEMP SCALE, then touch **Select**.
- 3 Touch the ⏪ or ⏩ arrows to select FAHRENHEIT or CELSIUS then touch **Done** to save your changes.
- 4 Touch **Back** to return to the thermostat home screen.

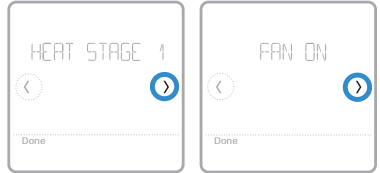


Viewing equipment status

You can check the status of your heating or cooling equipment and fan by following the steps below. Please note that system data may vary depending on thermostat model and how the thermostat was installed.

- 1 Touch **Menu** on the thermostat home screen.
- 2 Touch the ⏪ or ⏩ arrows until you see EQMT STATUS, then touch **Select**.
- 3 Touch the ⏪ or ⏩ arrows to select which system you want status information on.

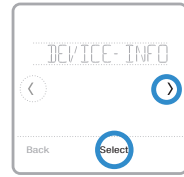
After 3 seconds, system status information will scroll on the screen.



Viewing thermostat information

To see your thermostat's technical information, follow the steps below.

- 1 Touch **Menu** on the thermostat home screen.
- 2 Touch the ◀ or ▶ arrows until you see **DEVICE INFO**, then touch **Select**.
- 3 Touch the ◀ or ▶ arrows to view information such as:
 - Model Number
 - Power Mode
 - Z-Wave Node ID
 - Z-Wave Home ID
 - Serial Number
 - Date code
 - Firmware version
 - Z-Wave Firmware version
 - Z-Wave library



Battery replacement

Batteries are optional (to provide backup power) if your thermostat was wired to run on 24 VAC power when installed. If your thermostat was wired to run on 24 VAC power, then batteries are NOT required.

Install fresh batteries immediately when the low battery alert appears. The alert appears about two months before the batteries are depleted.

Even if the low battery alert does not appear, you should replace batteries once a year, or before leaving home for more than a month.

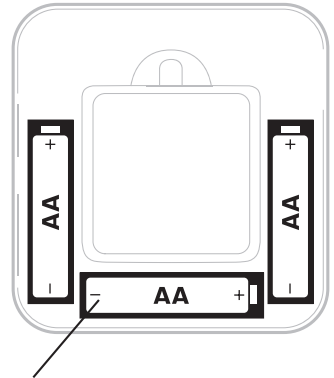
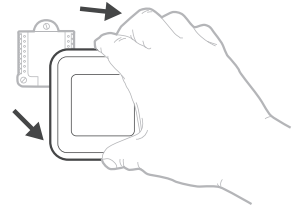
If batteries are inserted within two minutes, the time and day will not have to be reset. All other settings are permanently stored in memory, and do not require battery power.

NOTES:

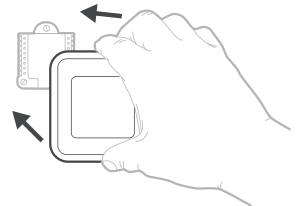
- When replacing batteries, alkaline batteries are recommended.
- When the battery power is low, the thermostat's backlight is disabled to save battery power.
- When battery power is critically low, only the alert icon and the battery icon are displayed, and the thermostat cannot control your HVAC system. Batteries must be replaced immediately.



When the low battery alert appears, press gently to loosen the thermostat and then carefully pull it from the wall mount.




Insert fresh alkaline AA batteries and reinstall thermostat. Match the polarity of the batteries with the + / - marks inside the battery compartment.





Alerts and maintenance reminders

The T6 Pro Z-Wave thermostat comes with a set of Smart Alerts that helps keep your heating and cooling system running correctly and efficiently. If Smart Alerts are set up by your HVAC professional, you can get reminders when it's time to change the filter and when your system is not running correctly.

Non-critical alerts and maintenance reminders can be snoozed for up to 7 days and/or dismissed. Some critical alerts cannot be snoozed or dismissed as your heating or cooling system may require service.

When there's an active alert or maintenance reminder, you'll see the alert symbol  on the thermostat home screen. To see alert information, follow the steps below.

- 1 Touch **Menu** on the thermostat home screen, then you'll see the ALERTS sub-menu. (The ALERTS sub-menu will only be available when there's an active alert.)
- 2 Touch **Select** to view the alert. A 3-digit alert code will appear by the thermostat's clock and a description of the alert will scroll on the screen.
- 3 If the alert is non-critical, you'll have the option to Snooze or Dismiss it. If you have multiple alerts, touch the  or  arrows to page through the list of active alerts and follow steps 1 and 2 above.

To see what each 3-digit alert code means and the action you should take, refer to the chart below.

Number	Alert/Reminder	Definition
54	Thermostat Humidity Sensor Error	The sensor of the thermostat has encountered an error. Please contact dealer to replace the thermostat.
164	Heat Pump Needs Service	Heat pump needs service. Contact dealer to diagnose and service heat pump.
170	Internal Memory Error	The memory of the thermostat has encountered an error. Please contact dealer for assistance.
171	Set the Date and Time	Set the date and time on your thermostat. The date and time are required for certain features to operate, like the program schedule.
173	Thermostat Temperature Sensor Error	The sensor of the thermostat has encountered an error. Please contact dealer to replace the Thermostat.
177	Indoor Temperature Sensor Error	Wired indoor temperature sensor is not connected or there is a wiring short. Please contact dealer for assistance.
178	Outdoor Temperature Sensor Error	Wired outdoor temperature sensor is not connected or there is a wiring short. Please contact dealer for assistance.
181	Replace Air Filter (1)	Replace air filter (1). Reset the timer by touching the "dismiss" button on thermostat screen after it is replaced.
182	Replace Air Filter (2)	Replace air filter (2). Reset the timer by touching the "dismiss" button on thermostat screen after it is replaced.

Number	Alert/Reminder	Definition
184	Replace Humidifier Pad	Replace humidifier pad. Reset the timer by touching the "dismiss" button on the thermostat screen after it is replaced.
185	Replace Dehumidifier Filter	Replace the dehumidifier filter. Reset the timer by touching "dismiss" button on thermostat screen after it is replaced.
186	Clean Ventilator Core	Clean ventilator core. Reset the timer by touching the "dismiss" button on thermostat screen after it is replaced.
187	Clean or Replace Ventilator Filter	Clean or replace ventilator filter. Reset the timer by touching the "dismiss" button on thermostat screen after it is replaced.
188	Replace UV Bulb (1)	Replace UV Bulb (1). Reset the timer by touching the "dismiss" button on thermostat screen after it is replaced.
189	Replace UV Bulb (2)	Replace UV Bulb (2). Reset the timer by touching the "dismiss" button on thermostat screen after it is replaced.
252	AC Power Lost	If batteries used as backup power it will drain batteries quickly and Z-Wave communication needs to be turned off. The working power mode can only be changed when thermostat is NOT included in a Z-Wave network. Either to exclude and include thermostat in to Z-Wave network to change the power mode to LSS (power-save, sleep mode) or to resume AC power. You can check the actual power mode in the thermostat MENU/DEVICE INFO .
405	Battery Low	Battery low. Please turn the system mode to off and replace the batteries.
407	Battery Critical	Battery critical. Thermostat cannot control your system. Please replace the batteries immediately.
546	Z-Wave Not Configured	Z-Wave has not been configured yet to receive commands from your Z-Wave network. Please follow steps on how to include thermostat in to Z-Wave network.
547	Z-Wave Radio Error	Z-Wave module is not operating. Thermostat cannot receive commands from your Z-Wave network. Please contact dealer to replace the thermostat.

Troubleshooting

Screen is blank

- Check circuit breaker and reset if necessary.
- Make sure power switch at heating and cooling system is on.
- Make sure furnace door is closed securely.
- If battery powered, make sure the batteries are fresh and correctly inserted.

Screen is difficult to read

- Change screen brightness in thermostat **Menu**. Increase brightness intensity for inactive backlight of the thermostat screen (max. is level 5). Setting is only available if thermostat is AC powered

Heating or cooling system does not respond

- Touch **Mode** to set system to Heat. Make sure the temperature is set higher than the Inside temperature.
- Touch **Mode** to set system to Cool. Make sure the temperature is set lower than the Inside temperature.
- Check circuit breaker and reset if necessary.
- Make sure power switch at heating & cooling system is on.
- Make sure furnace door is closed securely.

Temperature settings do not change

Your installer may have set a range stop setting for heat or cooling. Contact your installer to verify the range stop settings on the thermostat. Default range stops settings are:

- Heat: 40 °F to 90 °F (4.5 °C to 32.0 °C)
- Cool: 50 °F to 99 °F (10.0 °C to 37.0 °C)

“Cool On” or “Heat On” is flashing

- Compressor protection feature is engaged. Wait 5 minutes for the system to restart safely, without damage to the compressor (see page 8).

5-year warranty

Honeywell warrants this product, to be free from defects in the workmanship or materials, under normal use and service, for a period of five (5) years from the date of purchase by the consumer. If at any time during the warranty period the product is determined to be defective or malfunctions, Honeywell shall repair or replace it (at Honeywell's option).

If the product is defective,

(i) return it, with a bill of sale or other dated proof of purchase, to the place from which you purchased it; or

(ii) call Honeywell Customer Care at 1-800-468-1502. Customer Care will make the determination whether the product should be returned to the following address: Honeywell Return Goods, Dock 4 MN10-3860, 1985 Douglas Dr. N., Golden Valley, MN 55422, or whether a replacement product can be sent to you.

This warranty does not cover removal or reinstallation costs. This warranty shall not apply if it is shown by Honeywell that the defect or malfunction was caused by damage which occurred while the product was in the possession of a consumer.

Honeywell's sole responsibility shall be to repair or replace the product within the terms stated above. HONEYWELL SHALL NOT BE LIABLE FOR ANY LOSS OR DAMAGE OF ANY KIND, INCLUDING ANY INCIDENTAL OR CONSEQUENTIAL DAMAGES RESULTING, DIRECTLY OR INDIRECTLY, FROM ANY BREACH OF ANY WARRANTY, EXPRESS OR IMPLIED, OR ANY OTHER FAILURE OF THIS PRODUCT. Some states do not allow the exclusion or limitation of incidental or consequential damages, so this limitation may not apply to you.

THIS WARRANTY IS THE ONLY EXPRESS WARRANTY HONEYWELL MAKES ON THIS PRODUCT. THE DURATION OF ANY IMPLIED WARRANTIES, INCLUDING THE WARRANTIES OF MERCHANTABILITY AND FITNESS FOR A PARTICULAR PURPOSE, IS HEREBY LIMITED TO THE FIVE-YEAR DURATION OF THIS WARRANTY.

Some states do not allow limitations on how long an implied warranty lasts, so the above limitation may not apply to you. This warranty gives you specific legal rights, and you may have other rights which vary from state to state.

If you have any questions concerning this warranty, please write Honeywell Customer Relations, 1985 Douglas Dr, Golden Valley, MN 55422 or call 1-800-468-1502.

General system information



CAUTION: ELECTRICAL HAZARD

Can cause electrical shock or equipment damage. Disconnect power before beginning installation.



CAUTION: EQUIPMENT DAMAGE HAZARD

Compressor protection is bypassed during testing. To prevent equipment damage, avoid cycling the compressor quickly.



CAUTION: MERCURY NOTICE

If the T6 Pro Z-Wave thermostat is replacing a thermostat that contains mercury in a sealed tube, do not place the old thermostat in the trash. Please contact your local waste management authority for proper recycling or disposal instructions.

Regulatory information

FCC REGULATIONS

§ 15.19 (a)(3)

This device complies with part 15 of the FCC Rules. Operation is subject to the following two conditions:

- This device may not cause harmful interference, and
- This device must accept any interference received, including interference that may cause undesired operation.

IC REGULATIONS

RSS-GEN

This device complies with Industry Canada's license-exempt RSSs.

Operation is subject to the following two conditions:

- This device may not cause interference; and
- This device must accept any interference, including interference that may cause undesired operation of the device.

FCC Warning (Part 15.21) (USA only)

Changes or modifications not expressly approved by the party responsible for compliance could void the user's authority to operate the equipment.

Home and Building Technologies

In the U.S.:

Honeywell International Inc.

715 Peachtree Street NE

Atlanta, GA 30308

<http://customer.honeywell.com>

*U.S. Registered Trademark.

© 2017 Honeywell International Inc.

33-00296EFS-01 M.S. 09-17

Printed in U.S.A.