



## TerraWave Solutions® 2.4 GHz 19 dBi Panel Antenna with N-Style Jack Connector

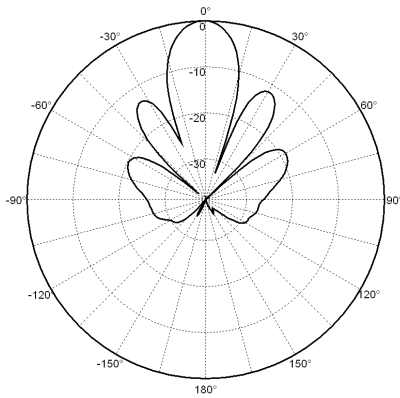
TerraWave's 2.4 GHz 19 dBi directional antenna is perfect for a variety of wireless applications. This antenna is single linear polarization and can be mounted in either a vertical or horizontal polarization configuration. It consists of a patented, low cost, high performance circuit design enclosed in a UV stabilized ABS plastic radome with aluminum backplane for superior durability. Meets IP67 weatherproofing requirements and includes a pole mounting kit.

All TerraWave antennas are covered by the Company's two-year TerraNet warranty program. For questions and to purchase product, contact a wireless networking solutions sales engineer at 210-375-8482, 800-851-4965 or sales@terrawave.com. Visit [www.terrawave.com](http://www.terrawave.com) for additional information.

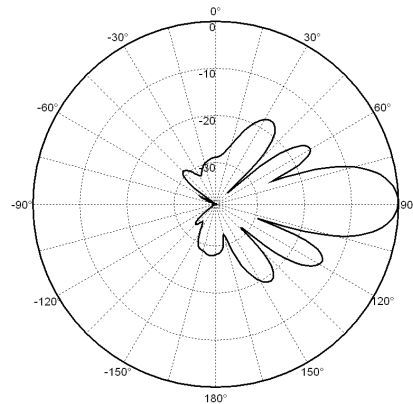


Electrical Specifications	
Model	T24190P10006GT
Frequency Range	2.4 - 2.5 GHz
Gain	19 dBi
Vertical Beamwidth	18°
Horizontal Beamwidth	18°
Polarization	Single linear, horizontal or vertical
VSWR	≤ 1.5:1
Front-to-Back Ratio	> 30 dB
Cross Polarization	> 30 dB
Power Rating	30 Watts
Impedance	50 Ohms

Mechanical and Environmental Specifications	
Dimensions (LxWxD)	13.8" x 13.8" x 1"
Weight	3.1 lbs.
Connector Type	Integrated N-Style Jack
Backplane	Aluminum
Radome	Gray UV stabilized ABS plastic
Wind Survivability	125 mph
Wind Load	1.90 ft <sup>2</sup>
Operating Temperature Range	-49°F to +149°F
Pole Mount Diameter Range	1.40" to 1.97"



**E-Plane**

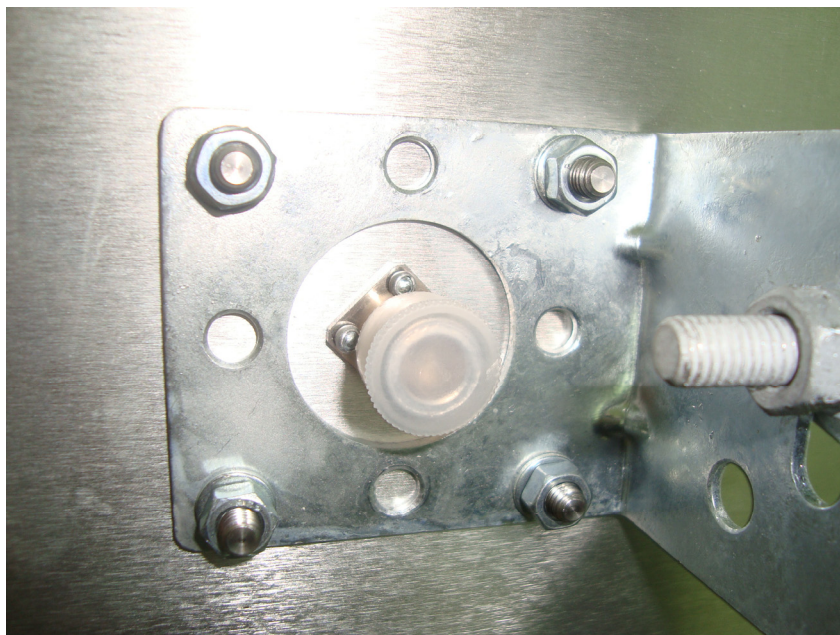


**H-Plane**

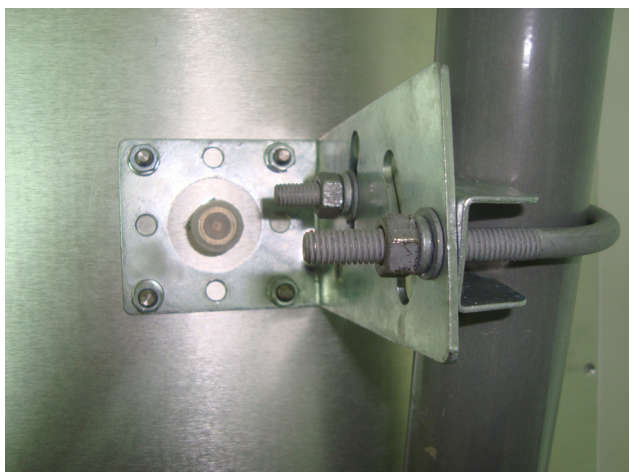


**TerraWave Solutions® 2.4 GHz 19 dBi Panel Antenna with N-Style Jack Connector**

**Mounting Information for T24190P10006GT**



**Mounting Bracket—Side View**



**Mount Secured to Antenna**



**Mount Secured to Pole/Mast**