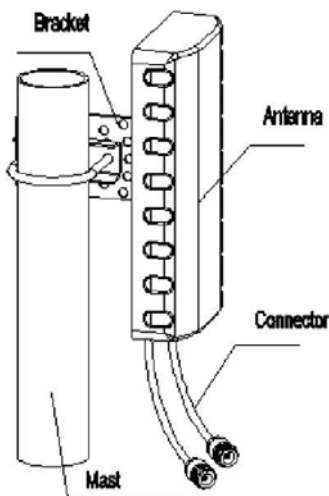




2.4 GHz Sector Panel Antenna with N-Style Plug Connectors

Ventev's TerraWave 2.4 GHz Sector Panel Antenna is designed to operate with any manufacturer's two-lead access point. This antenna operates in the 2400 - 2500 MHz frequency with a gain of 11 dBi. The antenna includes two 36" pigtailed terminated with N-style Plug connectors. A rugged exterior and sturdy mounting hardware make this antenna well suited to support demanding outdoor wireless applications in industries including oil & gas, transportation, and manufacturing. *Every Ventev TerraWave antenna is covered by the company's two-year warranty program. For questions and to purchase product, contact a regional sales executive at 210-375-8482, 800-851-4965 or sales@ventev.com.*



Specifications	
Model	T24110MP1S23607
Frequency Range	2400~2500 MHz
Bandwidth	100 MHz
Gain	11 dBi
Electrical Downtilt	0°
Half-Power Beamwidth	Horizontal: 65°, Vertical: 30°
VSWR	≤ 1.5
Nominal Impedance	50 Ohms
Front to Back Ratio (dB)	≥ 18
Isolation (dB)	≥ 28
Polarization	Vertical / Horizontal
Max Power	50 Watts
Connector	2 x N-Style Plug with 36" Pigtailed
Dimensions	8.27" x 4.72" x 1.65"
Weight	1.3 lbs
Operating Temperature	-40° F to 140° F (-40°C to 60° C)
Wind Rated Velocity (m/s)	60
Mount Style	Pole or Mast
Color	White

