

## ODU mounting brackets

The integrated mounting bracket (Figure 8) and connectorized mounting bracket (Figure 9) are used to mount the PTP 650 or PTP 650S or PTP 650L ODUs on poles with diameters in the range 50 to 75 mm (2 to 3 inches). The extended integrated mounting bracket (Figure 10) is used for mounting an integrated or connectorized ODU on poles with a diameter of either 90 mm (3.5 inches) or 115 mm (4.5 inches).

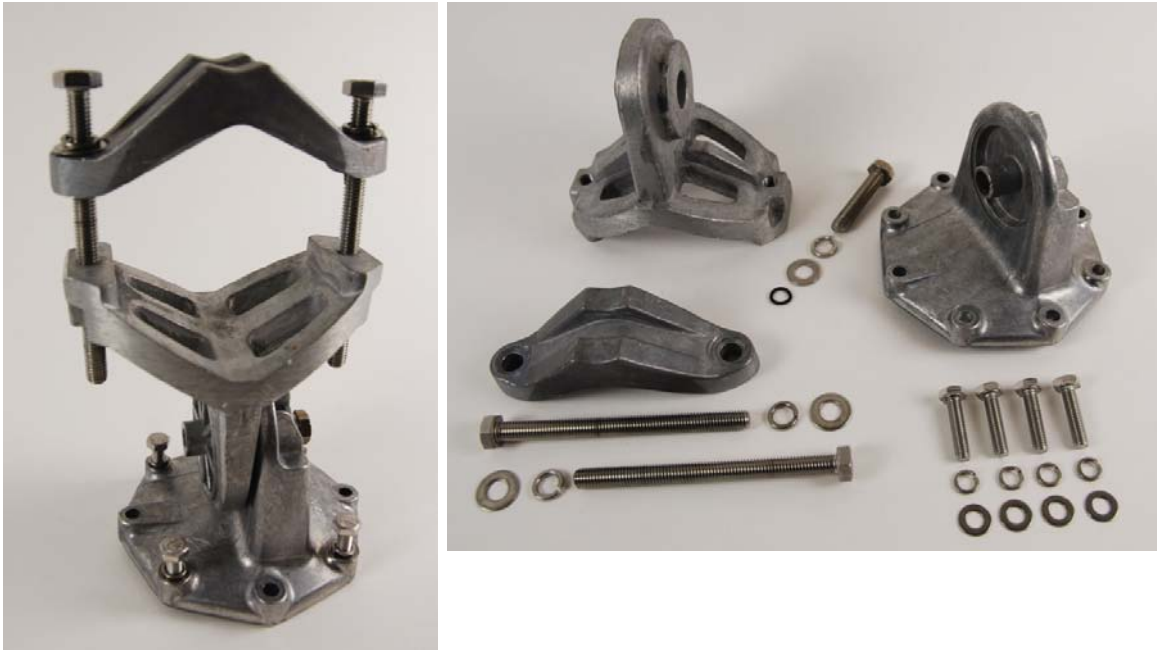
The large diameter extension kit (Figure 11) is be used with the integrated bracket to mount an ODU on a pole with diameter up to 229 mm (9.0 inches). The low profile bracket (Figure 12) is used to mount a PTP 650S or PTP 650L ODU on a pole of diameter 40 mm to 82 mm (1.6 inches to 3.2 inches) or 89 mm to 229 mm ((3.5 inches to 9.0 inches).

Before ordering ODU mounting brackets, be aware of the following:

- Individual integrated ODUs are supplied without a mounting bracket.
- Individual connectorized ODUs are supplied with a connectorized mounting bracket.
- ODUs in kits are supplied with an integrated or connectorized bracket, as appropriate.

If separate ODU mounting brackets are required, order them from Cambium Networks ([Table 12](#)).

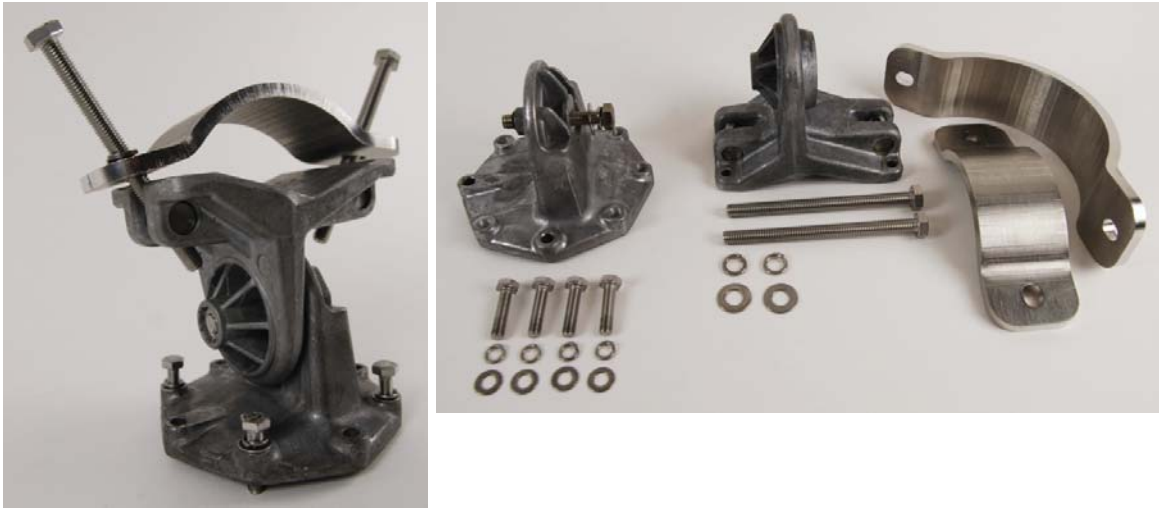
**Figure 8** ODU mounting bracket (integrated)



**Figure 9** ODU mounting bracket (connectorized)



**Figure 10** ODU extended integrated mounting bracket



**Figure 11** ODU large diameter extension kit



**Figure 12** ODU low profile bracket



**Table 12** ODU mounting bracket part numbers

Bracket	Pole diameter	ODU variants	Bracket part number
Mounting bracket (integrated)	40 mm to 82 mm (1.6 inches to 3.2 inches)	PTP 650 Integrated PTP 650S Integrated PTP 650L Integrated	N000065L031
Mounting bracket (connectorized)	40 mm to 82 mm (1.6 inches to 3.2 inches)	PTP 650 Connectorized	N000065L032
Extended integrated mounting bracket	89 mm <i>OR</i> 114 mm (3.5 inches <i>OR</i> 4.5 inches)	PTP 650 Integrated PTP 650S Integrated PTP 650L Integrated PTP 650 Connectorized	N000065L030
Mounting bracket (integrated) with large diameter extension kit	89 mm to 229 mm (3.5 inches to 9.0 inches)	PTP 650 Integrated PTP 650S Integrated PTP 650L Integrated PTP 650 Connectorized	N000065L031 with N000065L042
Low profile bracket	40 mm to 82 mm (1.6 inches to 3.2 inches)	PTP 650S Integrated PTP 650L Integrated	N000065L039
	89 mm to 229 mm (3.5 inches to 9.0 inches)		

The low profile bracket provides elevation adjustment with the PTP 650S Integrated or PTP 650L Integrated ODU of +10° to -5° or +5° to -10°. A larger adjustment range is available using the standard integrated mounting bracket. The connectorized mounting bracket does not provide elevation adjustment.