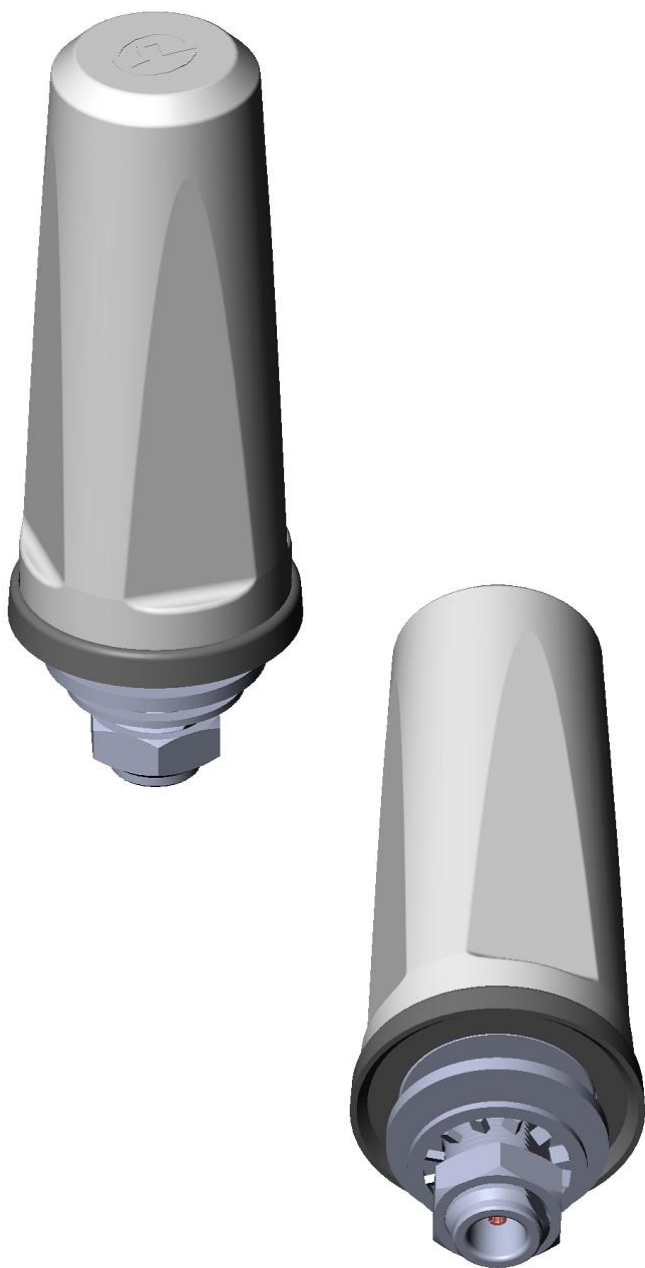


## Features:

- 617-960/1710-7125 MHz
- 4G / 5G (FR1), Dual Band WiFi Support
- Includes Band 71 (617- 698 MHz)
- Omni radiation pattern
- Average peak gain
  - 617-960 MHz 2dBi
  - 1710-7125 MHz 5.5dBi
- Average power rating 10W
- Size
  - Dia. 1.61" (40.9mm)
  - Height 3.77" (95.9mm)
  - W/ Connectors 4.77" (121.2mm)
- N-Female Connector
- LPT600/71DMN (Black)  
LPT600/71DMNW (White)

## Applications:

- CBRS Bands 42 and 48 (3.4-3.7 GHz)
- Utility boxes
- Smart metering
- IoT Devices



### Issue: 2047

In the effort to improve our products, we reserve the right to make changes judged to be necessary.

CONFIDENTIAL AND PROPRIETARY INFORMATION

This document contains confidential and proprietary information of Pulse Electronics, Inc. (Pulse) and is protected by copyright, trade secret and other state and federal laws. Its receipt or possession does not convey any rights to reproduce, disclose its contents, or to manufacture, use or sell anything it may describe. Reproduction, disclosure or use without specific written authorization of Pulse is strictly forbidden.

For more information:

Pulse Worldwide Headquarters  
15255 Innovation Drive #100  
San Diego, CA 92128  
USA  
Tel: 1-858-674-8100

Pulse/Larsen Antennas  
18110 SE 34<sup>th</sup> St Bldg 2 Suite 250  
Vancouver, WA 98683  
USA  
Tel: 1-360-944-7551

Europe Headquarters  
Pulse GmbH & Co, KG  
Zeppelinstrasse 15  
Herrenberg, Germany  
Tel: 49 7032 7806 0

Pulse (Suzhou) Wireless Products Co, Inc.  
99 Huo Ju Road(#29 Bldg, 4<sup>th</sup> Phase  
Suzhou New District  
Jiangsu Province, Suzhou 215009 PR China  
Tel: 86 512 6807 9998



**ELECTRICAL SPECIFICATIONS**

Antenna type*	Monopole
Frequency	617-960/1710-7125 MHz
Nominal Impedance	50 $\Omega$
VSWR (617-960/1710-7125)	3:1/2.5:1
Average peak gain (617-960/1710-7125)	2/5.5 dBi
Average efficiency (617-960/1710-7125)	83/85 %
Radiation Pattern	Omni
HPBW Vertical Plane (617-960/1710-7125)	65/40 °
Polarization	Vertical
Average Power rating	10 W

**MECHANICAL SPECIFICATIONS**

Diameter / height	1.61" / 3.77" (40.9 / 95.9mm)
Weight	.35lbs (160 g)
Antenna Color / Material	Black or White / PET+PC
Connector	N-Female
Mounting (required)	Ø .63 (16mm) Hole
Installation torque	4-5 Ft/lbs (See page 3)

**ENVIRONMENTAL SPECIFICATIONS**

Operating Temperature	-40° to +85° C
Storage Temperature	-40° to +85° C
Ingress Protection	IP66 and IP67
RoHS-6 Compliant	Yes

\* Measured on 12" (304.8mm) SQ ground plane

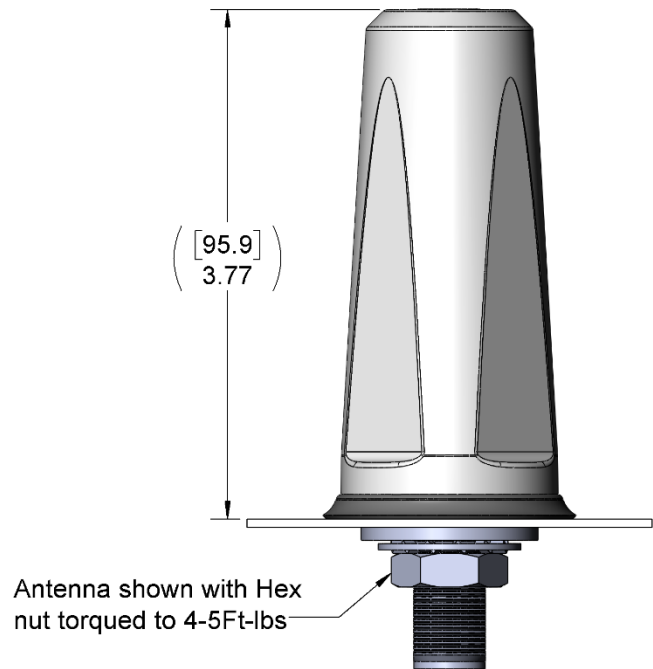
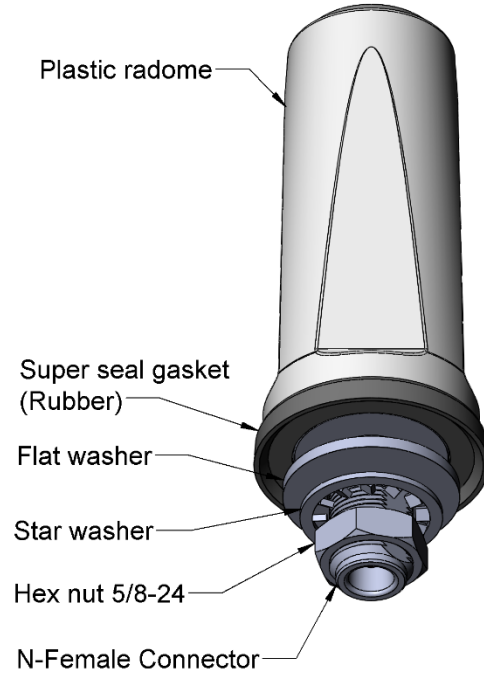
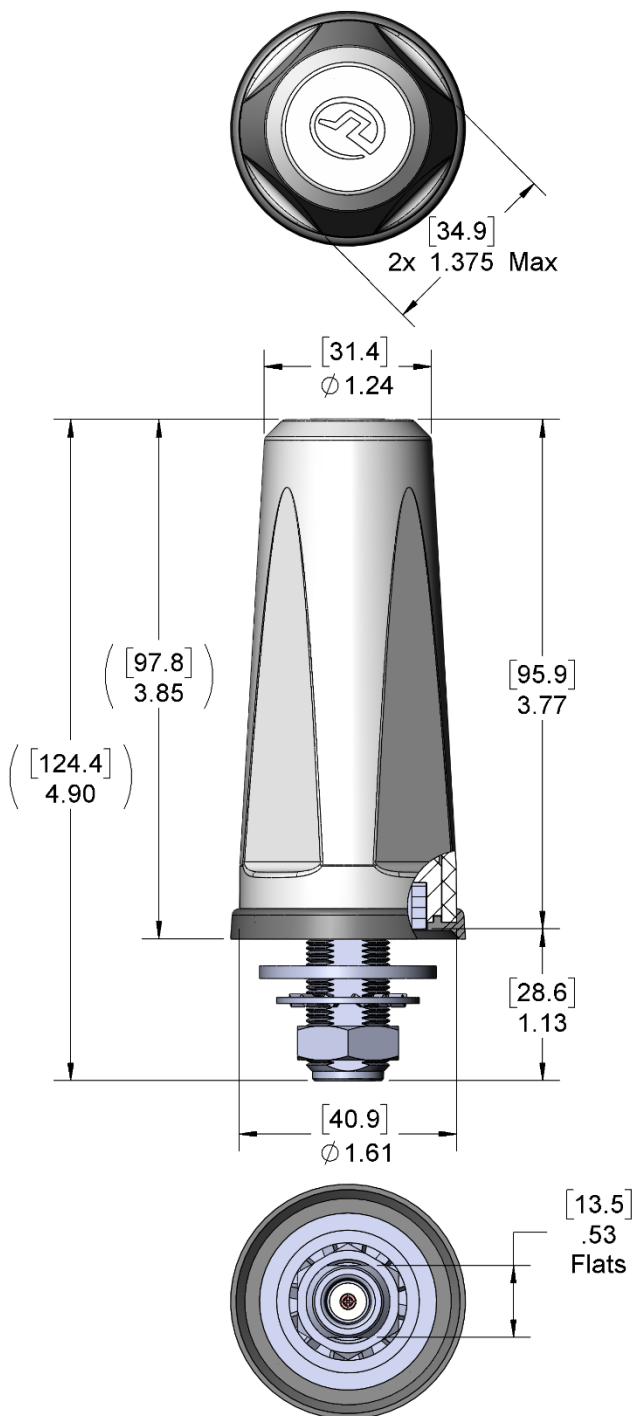
Issue: 2047

In the effort to improve our products, we reserve the right to make changes judged to be necessary.

CONFIDENTIAL AND PROPRIETARY INFORMATION

This document contains confidential and proprietary information of Pulse Electronics, Inc. (Pulse) and is protected by copyright, trade secret and other state and federal laws. Its receipt or possession does not convey any rights to reproduce, disclose its contents, or to manufacture, use or sell anything it may describe. Reproduction, disclosure or use without specific written authorization of Pulse is strictly forbidden.

MECHANICAL DRAWING



All dimensions are in inches / mm

Issue: 2047

In the effort to improve our products, we reserve the right to make changes judged to be necessary.

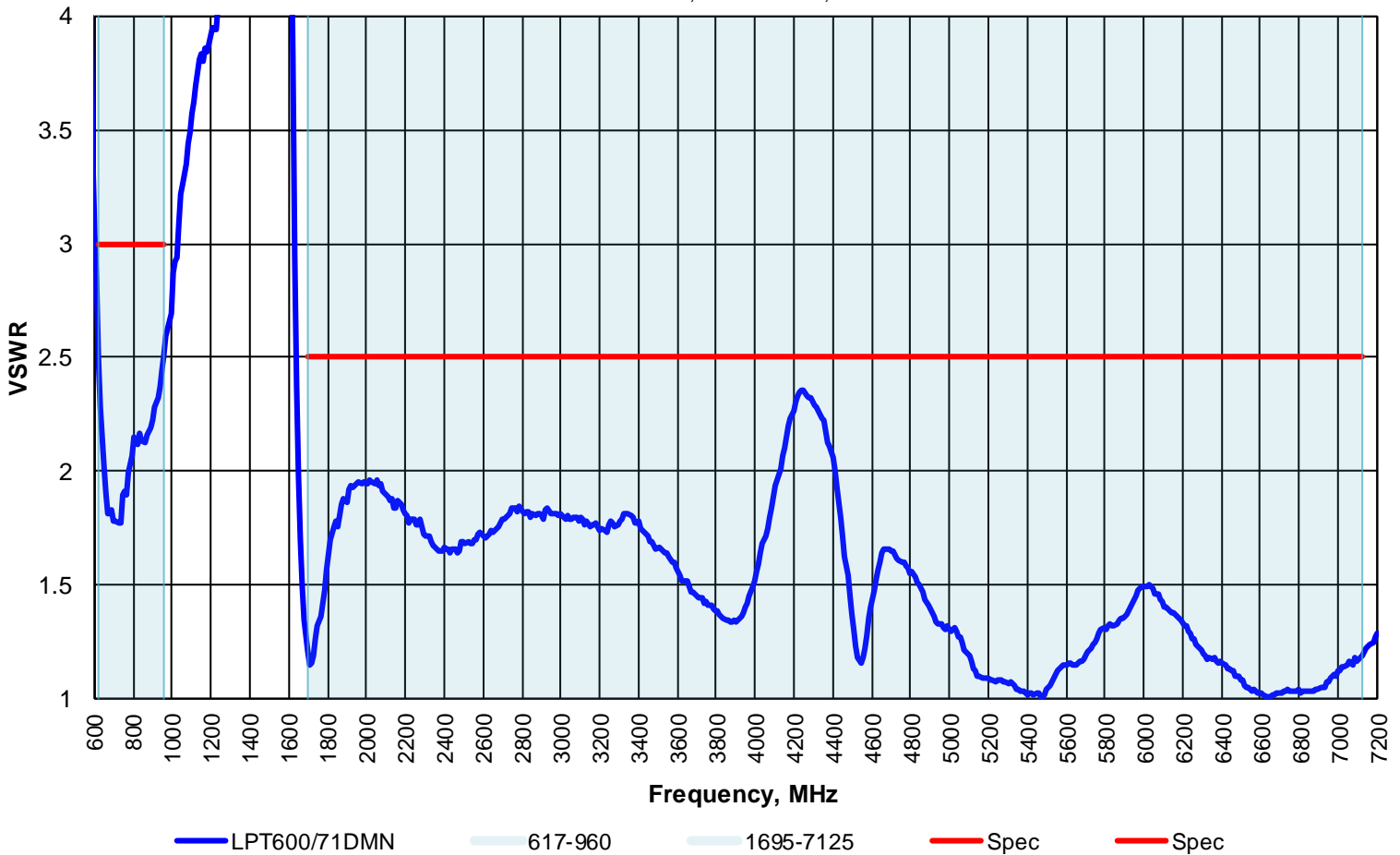
CONFIDENTIAL AND PROPRIETARY INFORMATION

This document contains confidential and proprietary information of Pulse Electronics, Inc. (Pulse) and is protected by copyright, trade secret and other state and federal laws. Its receipt or possession does not convey any rights to reproduce, disclose its contents, or to manufacture, use or sell anything it may describe. Reproduction, disclosure or use without specific written authorization of Pulse is strictly forbidden.

### CHARTS

**VSWR vs Frequency**  
**LPT600/71DMN Measured on 12" SQ GP**

Measured at Pulse, USA - Nov 18, 2020



\* Measured on 12" (304.8mm) SQ ground plane

Issue: 2047

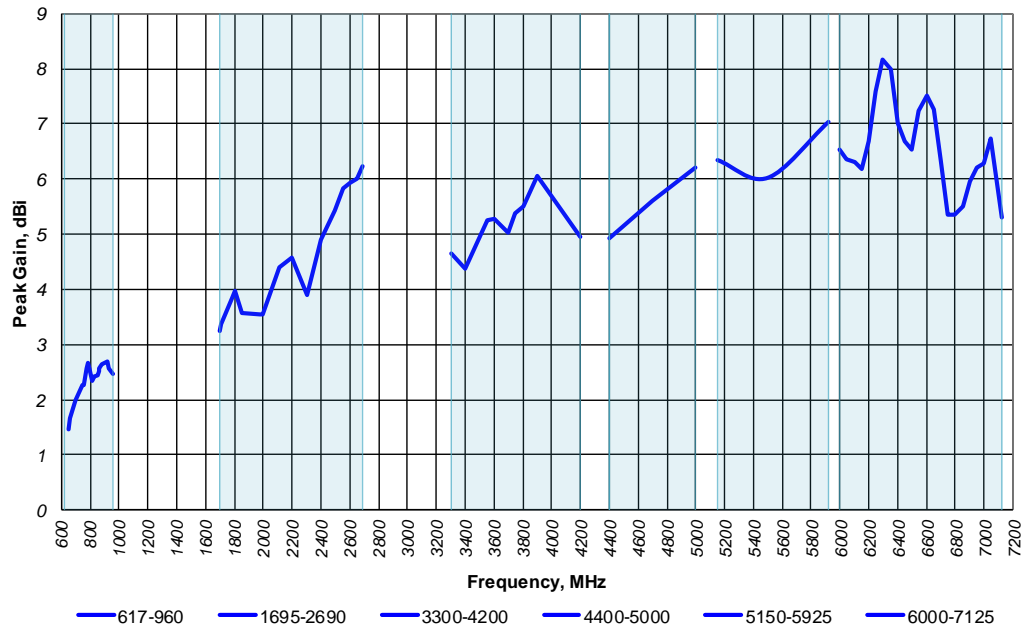
In the effort to improve our products, we reserve the right to make changes judged to be necessary.

CONFIDENTIAL AND PROPRIETARY INFORMATION

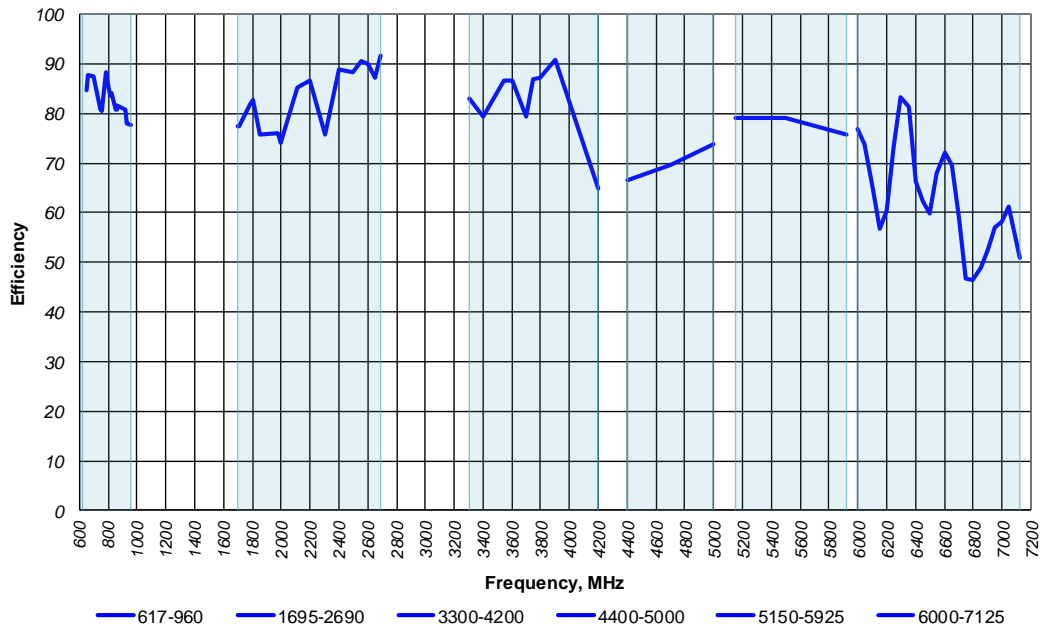
This document contains confidential and proprietary information of Pulse Electronics, Inc. (Pulse) and is protected by copyright, trade secret and other state and federal laws. Its receipt or possession does not convey any rights to reproduce, disclose its contents, or to manufacture, use or sell anything it may describe. Reproduction, disclosure or use without specific written authorization of Pulse is strictly forbidden.

## CHARTS

**Peak Gain vs Frequency**  
LPT600/71DMN Measured on 12" SQ GP  
Measured at Pulse, USA - Nov 18, 2020



**Efficiency vs Frequency**  
LPT600/71DMN Measured on 12" SQ GP  
Measured at Pulse, USA - Nov 18, 2020



\* Measured on 12" (304.8mm) SQ ground plane

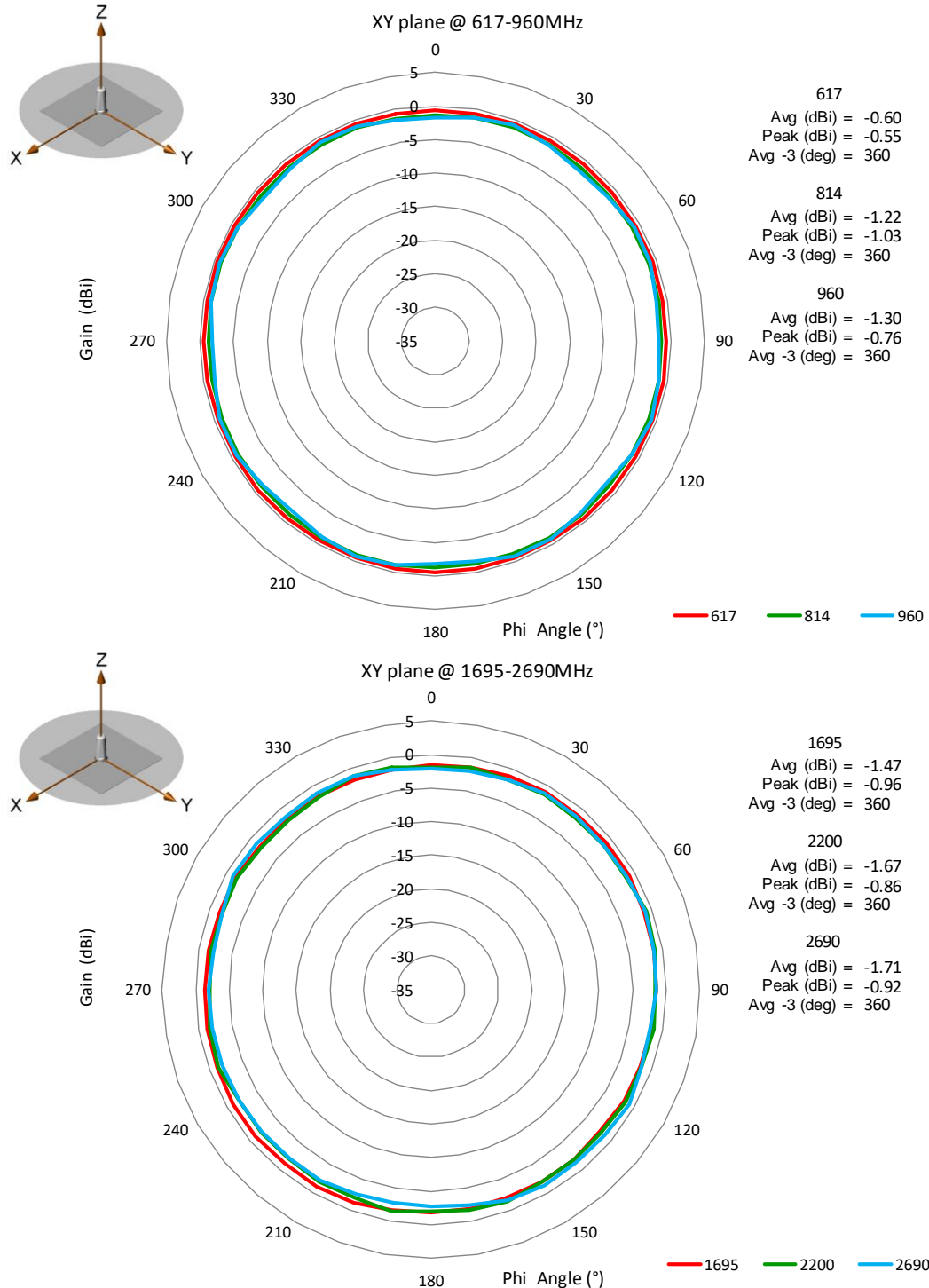
Issue: 2047

In the effort to improve our products, we reserve the right to make changes judged to be necessary.

CONFIDENTIAL AND PROPRIETARY INFORMATION

This document contains confidential and proprietary information of Pulse Electronics, Inc. (Pulse) and is protected by copyright, trade secret and other state and federal laws. Its receipt or possession does not convey any rights to reproduce, disclose its contents, or to manufacture, use or sell anything it may describe. Reproduction, disclosure or use without specific written authorization of Pulse is strictly forbidden.

## CHARTS



\* Measured on 12" (304.8mm) SQ ground plane

Issue: 2047

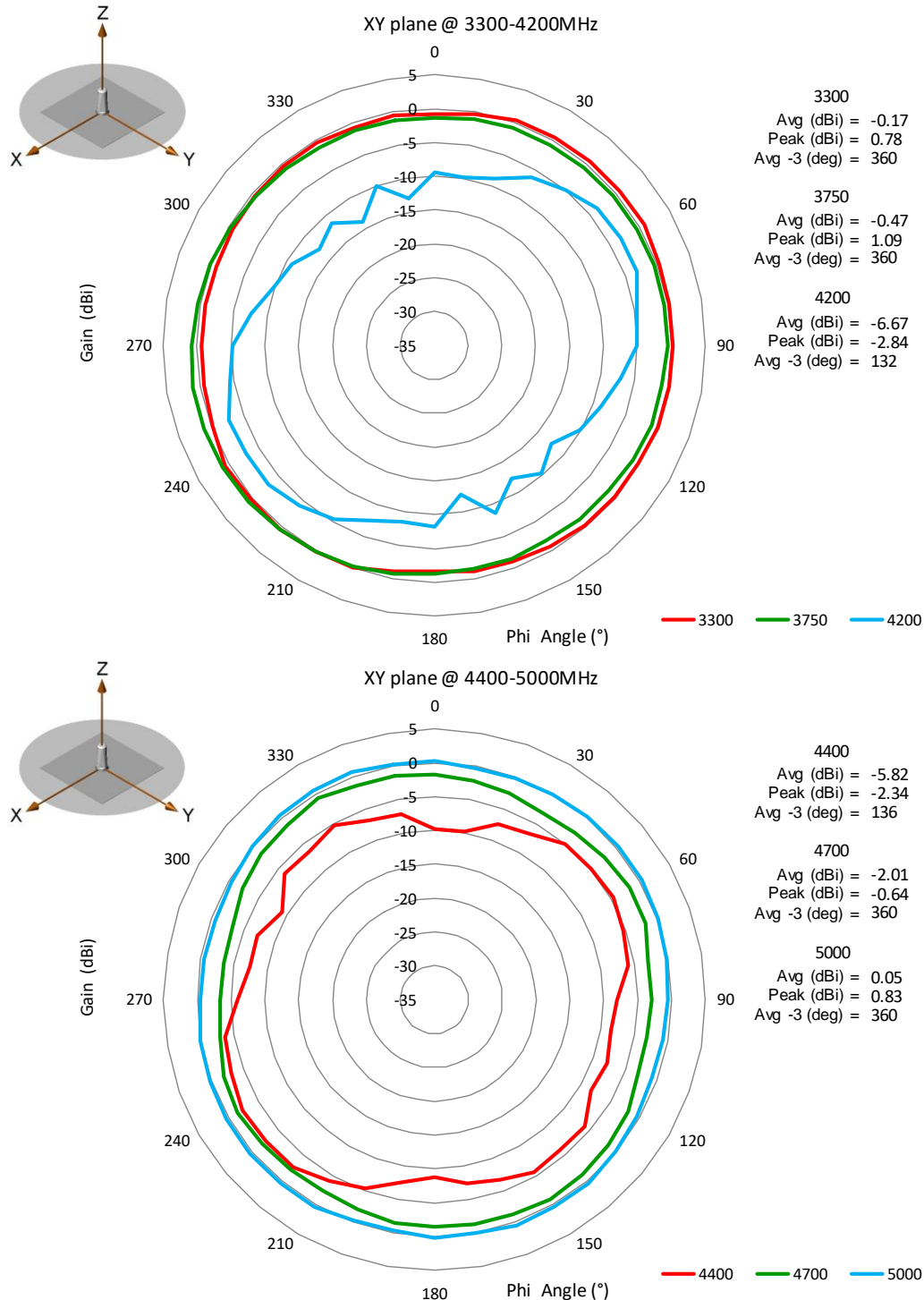
In the effort to improve our products, we reserve the right to make changes judged to be necessary.

CONFIDENTIAL AND PROPRIETARY INFORMATION

This document contains confidential and proprietary information of Pulse Electronics, Inc. (Pulse) and is protected by copyright, trade secret and other state and federal laws. Its receipt or possession does not convey any rights to reproduce, disclose its contents, or to manufacture, use or sell anything it may describe. Reproduction, disclosure or use without specific written authorization of Pulse is strictly forbidden.



### CHARTS



\* Measured on 12" (304.8mm) SQ ground plane

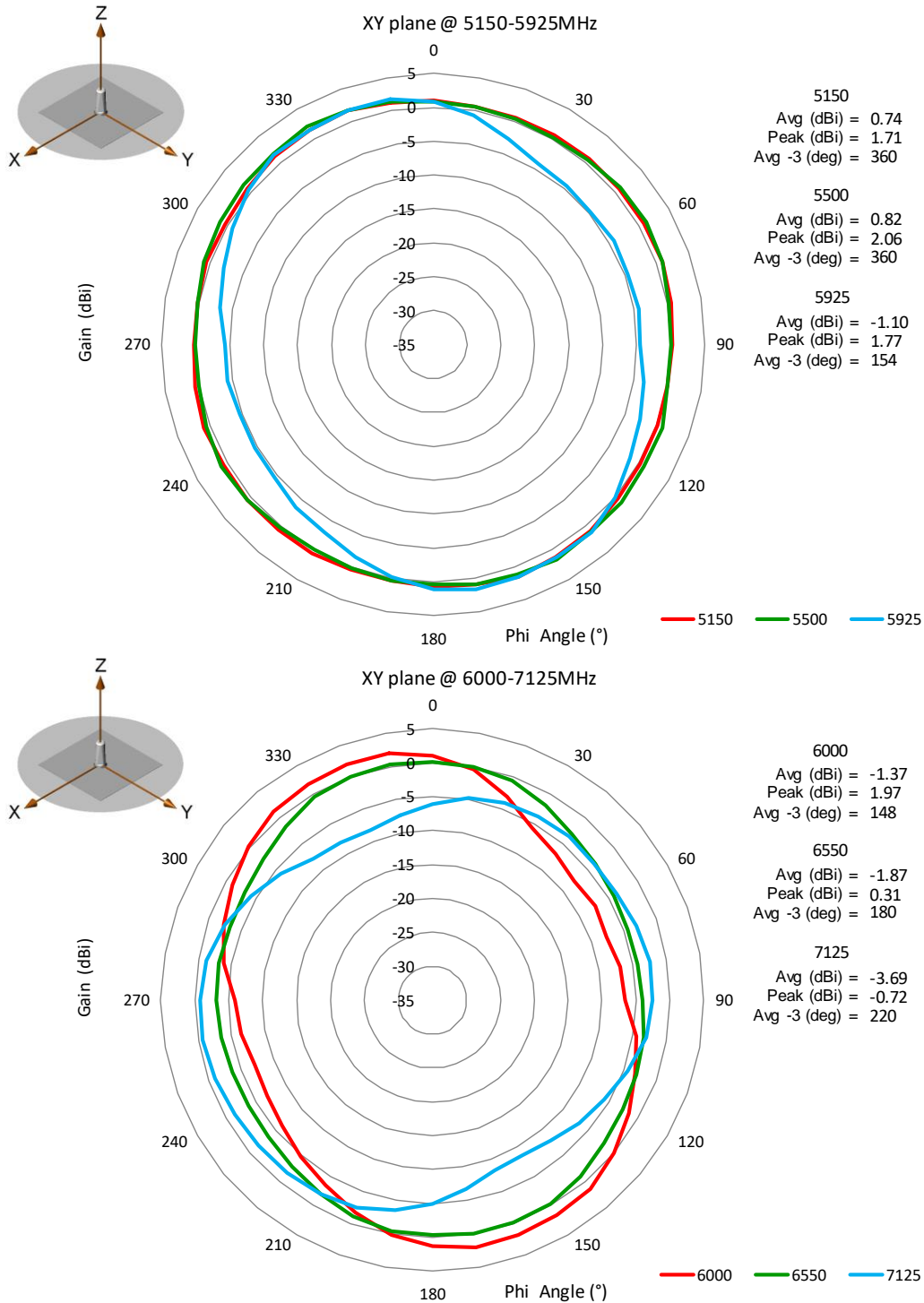
Issue: 2047

In the effort to improve our products, we reserve the right to make changes judged to be necessary.

CONFIDENTIAL AND PROPRIETARY INFORMATION

This document contains confidential and proprietary information of Pulse Electronics, Inc. (Pulse) and is protected by copyright, trade secret and other state and federal laws. Its receipt or possession does not convey any rights to reproduce, disclose its contents, or to manufacture, use or sell anything it may describe. Reproduction, disclosure or use without specific written authorization of Pulse is strictly forbidden.

## CHARTS



\* Measured on 12" (304.8mm) SQ ground plane

Issue: 2047

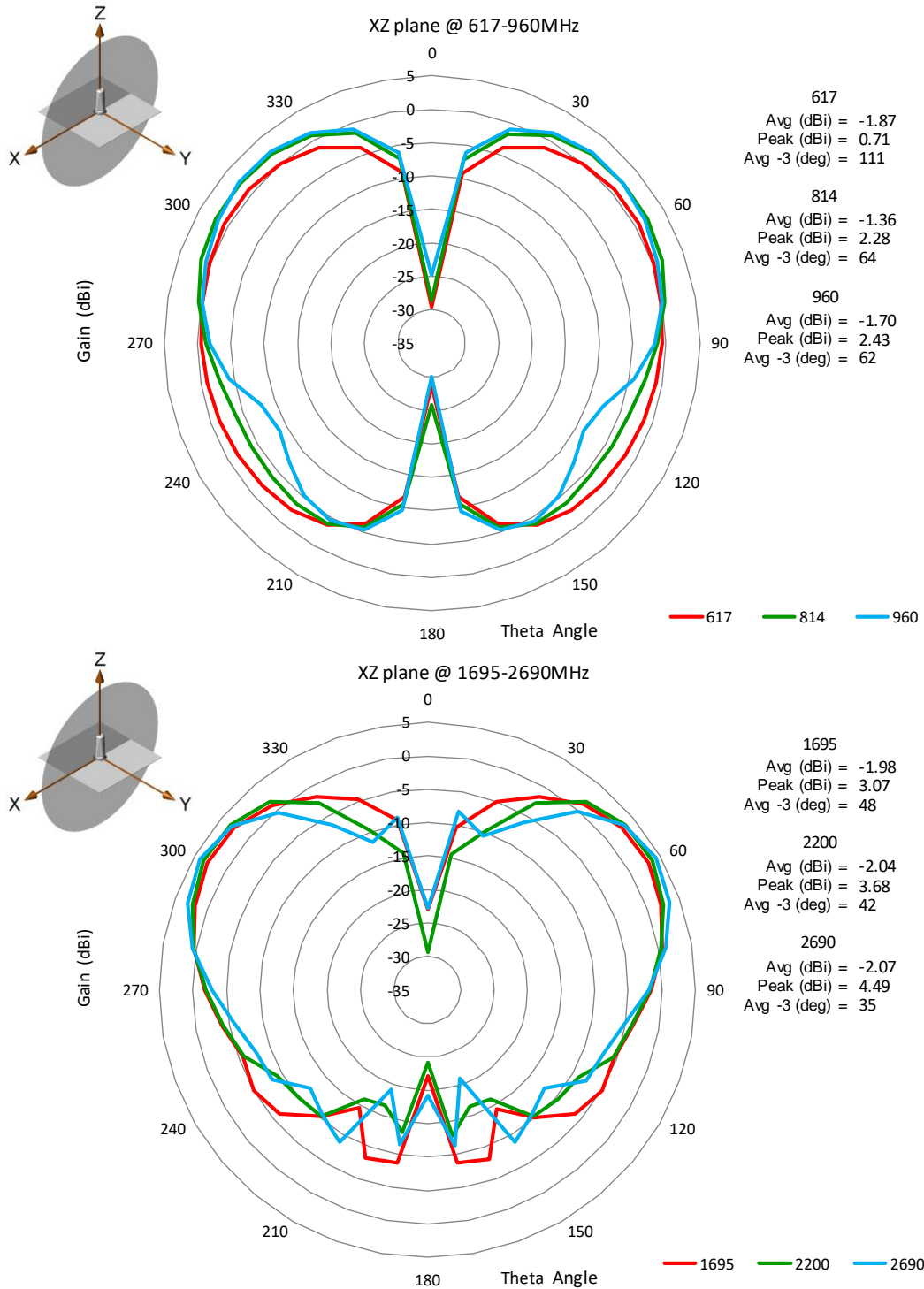
In the effort to improve our products, we reserve the right to make changes judged to be necessary.

CONFIDENTIAL AND PROPRIETARY INFORMATION

This document contains confidential and proprietary information of Pulse Electronics, Inc. (Pulse) and is protected by copyright, trade secret and other state and federal laws. Its receipt or possession does not convey any rights to reproduce, disclose its contents, or to manufacture, use or sell anything it may describe. Reproduction, disclosure or use without specific written authorization of Pulse is strictly forbidden.



## CHARTS



\* Measured on 12" (304.8mm) SQ ground plane

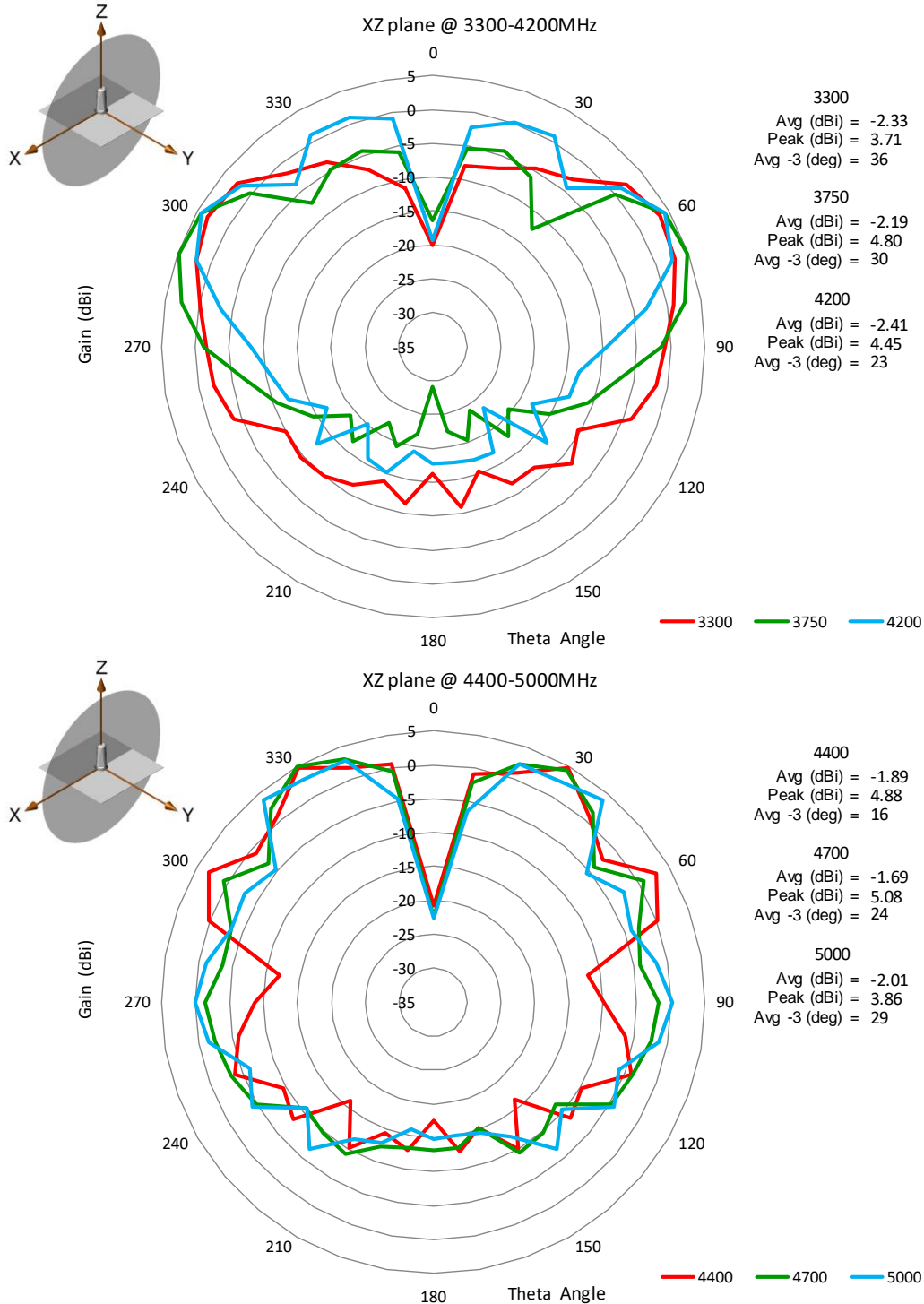
Issue: 2047

In the effort to improve our products, we reserve the right to make changes judged to be necessary.

CONFIDENTIAL AND PROPRIETARY INFORMATION

This document contains confidential and proprietary information of Pulse Electronics, Inc. (Pulse) and is protected by copyright, trade secret and other state and federal laws. Its receipt or possession does not convey any rights to reproduce, disclose its contents, or to manufacture, use or sell anything it may describe. Reproduction, disclosure or use without specific written authorization of Pulse is strictly forbidden.

## CHARTS



\* Measured on 12" (304.8mm) SQ ground plane

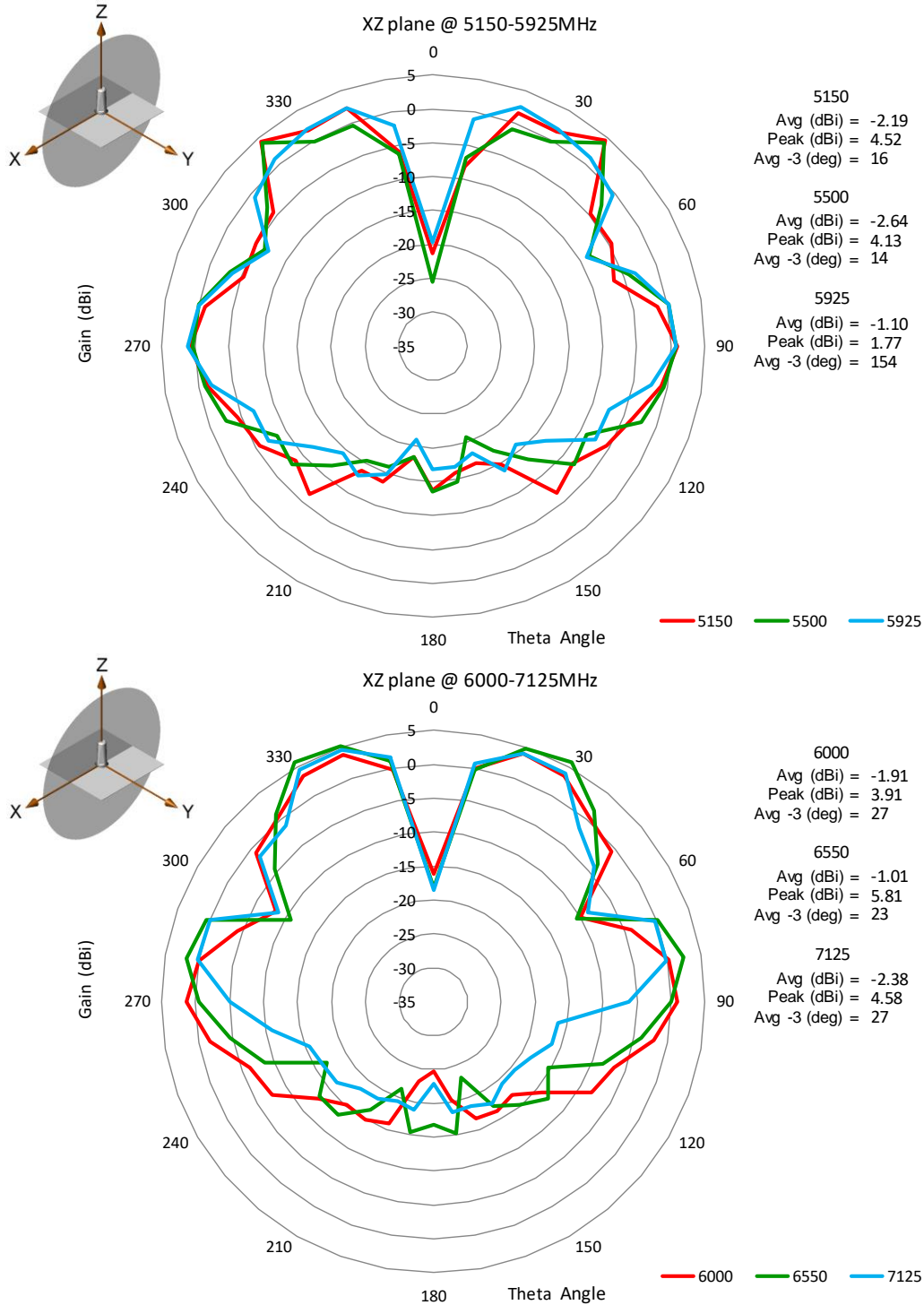
Issue: 2047

In the effort to improve our products, we reserve the right to make changes judged to be necessary.

CONFIDENTIAL AND PROPRIETARY INFORMATION

This document contains confidential and proprietary information of Pulse Electronics, Inc. (Pulse) and is protected by copyright, trade secret and other state and federal laws. Its receipt or possession does not convey any rights to reproduce, disclose its contents, or to manufacture, use or sell anything it may describe. Reproduction, disclosure or use without specific written authorization of Pulse is strictly forbidden.

### CHARTS



\* Measured on 12" (304.8mm) SQ ground plane

Issue: 2047

In the effort to improve our products, we reserve the right to make changes judged to be necessary.

CONFIDENTIAL AND PROPRIETARY INFORMATION

This document contains confidential and proprietary information of Pulse Electronics, Inc. (Pulse) and is protected by copyright, trade secret and other state and federal laws. Its receipt or possession does not convey any rights to reproduce, disclose its contents, or to manufacture, use or sell anything it may describe. Reproduction, disclosure or use without specific written authorization of Pulse is strictly forbidden.

**Description: 617-960/1710-7125MHz,  
N-Female mount, Monopole**

**Series: Low Profile Transit**

**PART NUMBER: LPT600/71DMN & LPT600/71DMNW**

## PACKAGING

1 antenna packed in a plastic bag

1 label on each plastic with part number, description, date code.

# Mouser Electronics

Authorized Distributor

Click to View Pricing, Inventory, Delivery & Lifecycle Information:

Pulse:

[LPT600/71DMN\(W\)](#) [LPT600/71DMNW](#)