

615 MHz-960 MHz / 1710 MHz-2700 MHz / 3300 MHz-7150 MHz, 0-5 dBi,  
4G 5G WiFi 6e Rubber Duck /Terminal antenna - SMA Male Connector



## HG67104RD-SM

### Features

- 0 to 4 dBi Gain
- Tilt and Swivel Design
- SMA Male Connector
- Blade Design

### Applications

- Infotainment Systems, Routers, WiFi Hotspots, HD Video Transmission, Gateways, Dash Cameras, Public Transportation
- WiFi 6e (802.11ax)
- Connected Cars or Self-Driving Cars, Fleet Management, Logistics
- 4G & 5G Networks
- 600, 700, 800, 850, 900, 1800, 1900, 2100, 2600, 3500, 5800 MHz, 6 GHz and 7 GHz Bands
- IoT, Cellular, Zigbee, Z-Wave, Bluetooth, CBRS, WiFi, C-Band, UNII

### Description

The HG67104RD-SM 5G Rubber Duck Antenna from L-com is a high performance omnidirectional “rubber-duck” antenna designed for the 615 MHz to 7125 MHz bands and is available to ship same day. It features a tilt-and-swivel SMA-Plug (male) connector, allowing them to be used vertically, at a right angle, or any angle in-between. It is a coaxial sleeve design with an omni-directional pattern. The HG67104RD-SM is ideally suited 4G, 5G, LTE, CBRS, UNII and WiFi 6e bands.

The L-com high performance rubber-duck HG67104RD-SM is a flexible antenna providing broad coverage and 1-4 dBi gain. This SMA male rubber duck is suitable for commercial radios in public and private 5G and Cellular networks that are equipped with SMA female connectors. L-com’s HG67104RD-SM supports 600, 700, 800, 850, 900, 1800, 2100, 2400, 2600, 3500, 5800 MHz, 6 GHz and 7 GHz bands.

This 5G 615 MHz to 7125 MHz rubber duck antenna with a SMA male connector, as well as our wide selection of superior quality RF parts, ships same day. Contact our knowledgeable and friendly technical support and sales staff for your answers on antennas or other L-com products.

### Configuration

Design	Portable
Band Type	Multi
Radiation Pattern	Omni Directional
Wavelength	1/2
Polarization	Vertical
Connector Type	SMA Male

### Electrical Specifications

Description	Minimum	Typical	Maximum	Units
Frequency Range	615		7.15	MHz
Input VSWR			3:1	
Impedance		50		Ohms
Gain		3.5		dBi
Gain	0			dBi

615 MHz-960 MHz / 1710 MHz-2700 MHz / 3300 MHz-7150 MHz, 0-5 dBi,  
4G 5G WiFi 6e Rubber Duck /Terminal antenna - SMA Male Connector



## HG67104RD-SM

### Specifications by Band

Description	Band 1	Band 2	Band 3	Band 4	Band 5	Units
Range	615-960	1,710-2,700	3,300-4,200	5,150-7,150		MHz
Gain	1	2	5	3.5		dBi

### Mechanical Specifications

Radome Material	ABS
<b>Size</b>	
Length	7.14 in [181.36 mm]

### Environmental Specifications

<b>Temperature</b>	
Operating Range	-20 to +65 deg C
Storage Range	-20 to +65 deg C

**Compliance Certifications** (see [product page](#) for current document)

### Plotted and Other Data

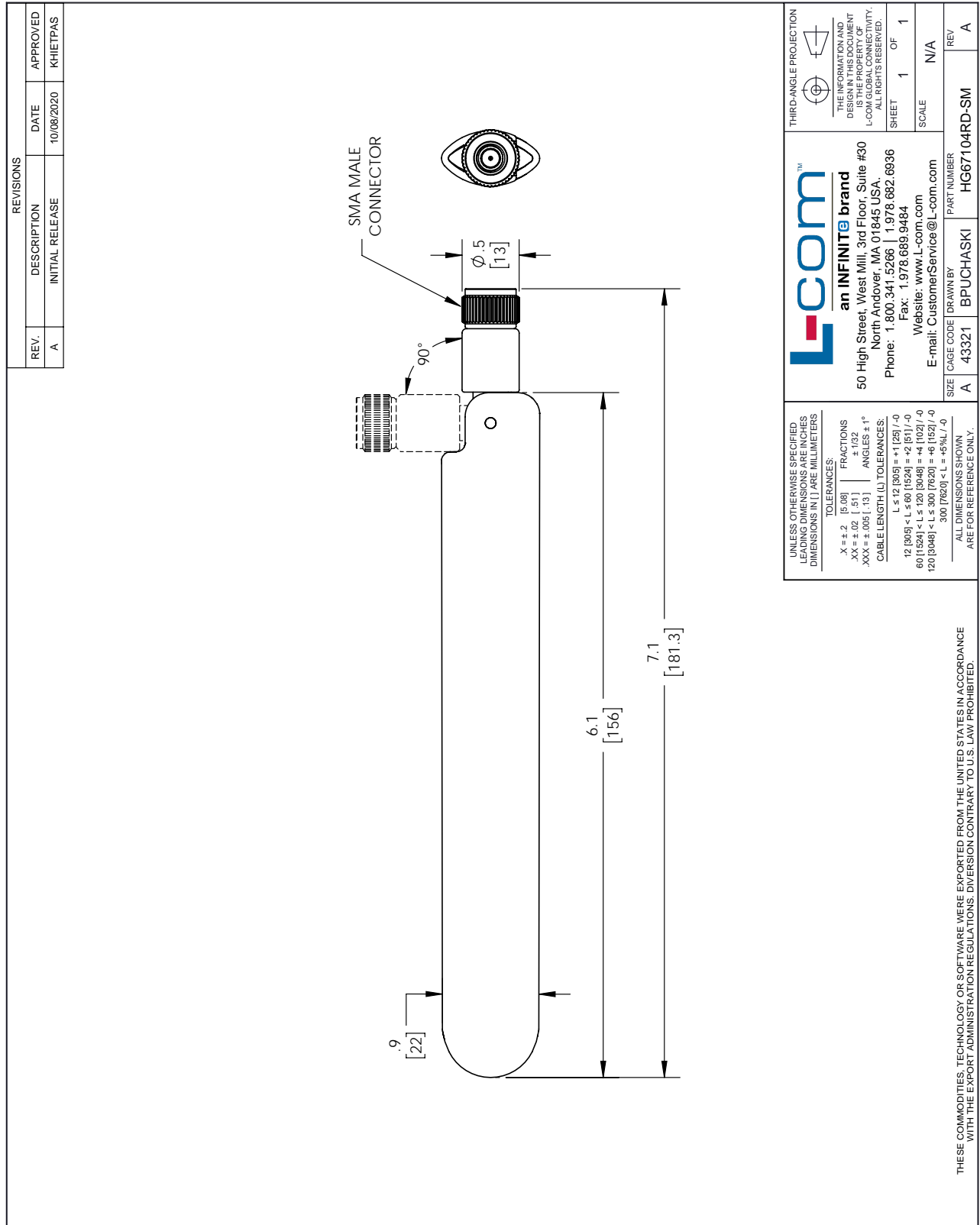
Notes:

615 MHz-960 MHz / 1710 MHz-2700 MHz / 3300 MHz-7150 MHz, 0-5 dBi, 4G 5G WiFi 6e Rubber Duck /Terminal antenna - SMA Male Connector from L-com has same day shipment for domestic and International orders. Our portfolio includes coaxial cable assemblies, connectors, adapters and custom products as well as lightning and surge protectors, NEMA rated enclosures, and an RF product line which includes antennas, amplifiers, passive, and active components.

The information contained within this document is accurate to the best of our knowledge and representative of the part described herein. It may be necessary to make modifications to the part and/or the documentation of the part in order to impliment improvements. L-com reserves the right to make such changes as required. Unless otherwise stated, all specifications are nominal. L-com does not make any representation or warranty regarding the suitability of the part described herein for any particular purpose, and L-com does not assume liability arising out of the use of any part or document.

615 MHz-960 MHz / 1710 MHz-2700 MHz / 3300 MHz-7150 MHz, 0-5 dBi, 4G  
 5G WiFi 6e Rubber Duck /Terminal antenna - SMA Male Connector

**L-com CAD Drawing**



**L-com™**  
**an INFINIT® brand**  
 50 High Street, West Mill, 3rd Floor, Suite #30  
 North Andover, MA 01845, USA.  
 Phone: 1.800.341.5266 | 1.978.682.6936  
 Fax: 1.978.689.9484  
 Website: www.L-com.com  
 E-mail: CustomerService@L-com.com

UNLESS OTHERWISE SPECIFIED  
 LEADING DIMENSIONS ARE IN INCHES  
 DIMENSIONS IN [ ] ARE MILLIMETERS

TOLERANCES:  
 .X = ±.2 [5.08] FRACTIONS ± 1/32  
 .XX = ±.02 [ .51] ANGLES ± 1°  
 .XXX = ±.005 [ .13]

CABLE LENGTH (L) TOLERANCES:  
 L ≤ 12 [305] = +1 [25] / -0  
 12 [305] < L ≤ 60 [1524] = +2 [51] / -0  
 60 [1524] < L ≤ 120 [3048] = +4 [102] / -0  
 120 [3048] < L ≤ 300 [7620] = +6 [152] / -0  
 300 [7620] < L = +5%L / -0

ALL DIMENSIONS SHOWN  
 ARE FOR REFERENCE ONLY.

SIZE CAGE CODE DRAWN BY PART NUMBER  
 A 43321 BPUCHASKI HG67104RD-SM

THESE COMMODITIES, TECHNOLOGY OR SOFTWARE WERE EXPORTED FROM THE UNITED STATES IN ACCORDANCE WITH THE EXPORT ADMINISTRATION REGULATIONS. DIVERSION CONTRARY TO U.S. LAW PROHIBITED.