

## 5 GHz Terrace Diversity

### Directional In-Building Antenna

Model Number:  
**IDD5250**

#### Specifications:

|                                      |                     |
|--------------------------------------|---------------------|
| <b>Element Type</b>                  | Microstrip          |
| <b>Frequency Range</b>               | 4.9 - 6 GHz         |
| <b>Peak Gain</b>                     | 5 dBi               |
| <b>Polarization</b>                  | Linear              |
| <b>Impedance</b>                     | 50 ohms             |
| <b>Maximum Input Power</b>           | 50 watts            |
| <b>VSWR (Min. Performance)</b>       | 2.0:1               |
| <b>Dimensions (L x W x H)</b>        | 12.2 x 4.3 x 2.7 cm |
| <b>Housing</b>                       | ABS                 |
| <b>Operating/Storage Temperature</b> | -40° to +70°C       |



#### Mounting:

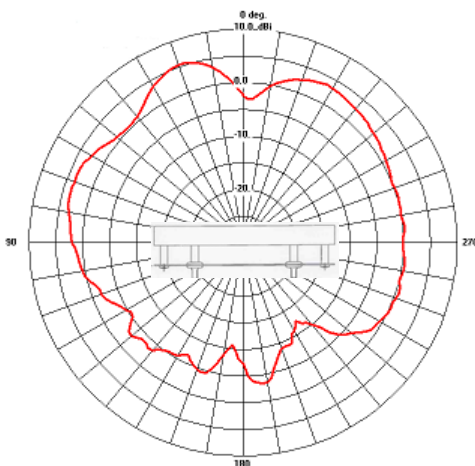
- Wall-mount bracket & screws, Dual-Lock®, & L-bracket included
- Indoor Optional Brackets:** 2" Indoor Pan/Tilt Mount (IMI-02C) & 5" Indoor Pan/Tilt Mount (IMI-05C)

#### Cables & Connectors:

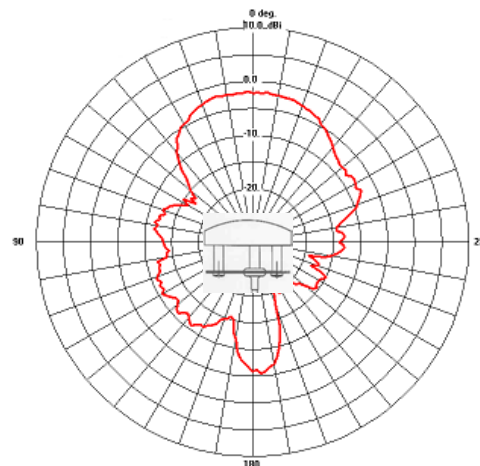
| Model #               | Reference # | Plenum Rated Coax | Connector       |
|-----------------------|-------------|-------------------|-----------------|
| <b>IDD5250-RS36</b>   | CAF94585    | 36" White RG-316  | RP-SMA x 2      |
| <b>IDD5250-RSRA36</b> | CAF94649    | 36" White RG-316  | RP-SMA R.A. x 2 |



Pattern data files for SitePlanner are available at [www.centurion.com](http://www.centurion.com) or [www.wirelessvalley.com](http://www.wirelessvalley.com).



**Azimuth Plane**  
5.57 GHz



**Elevation Plane**  
5.57 GHz

#### Optional Mounting Brackets:



**IMI-05D**  
5" Indoor Pan/Tilt Mount



**IMI-02D**  
2" Indoor Pan/Tilt Mount

Specifications subject to change without notice.

IDD5250a - 4/28/04