

## GPS-TMG-HR-26N, High Rejection 26dB With Enhanced Narrow Band Filtering

The GPS-TMG-HR-26 timing reference antennas feature a 26 dB amplifier and narrow band high rejection filtering specifically designed to support long-lasting, trouble-free deployments in congested cell-site applications with severe interference around the GPS L1 frequency.

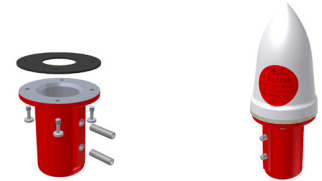
The proprietary quadrifilar helix design, coupled with multi-stage filtering provides superior out-of-band rejection and lower elevation pattern performance than traditional patch antennas.

The unique radome shape sheds water and ice, while eliminating problems associated with bird perching. The antenna may be purchased by itself or with pipe mounting hardware. Custom models or site kits options are also available. The antenna label and collar mount are color coded red for differentiation purposes.

This antenna is made of materials that fully comply with provisions stipulated by EU directives RoHS 2002/95/EC.



GPS-TMG-HR-26N



GPS-TMG-MNT-R GPS-TMG-HR-26NCM

### Antenna Element Electrical Specifications

Frequency Band	Antenna Gain	Nominal Impedance	VSWR	Polarization	Connector
1575.42 +/- 10 MHz	3.5 dBic	50 ohms	≤1.5:1	Right hand circular	N, female (one - bottom fed)

### Mechanical Specifications

Antenna Dimensions	Shipping Dimensions	Antenna Weight	Shipping Weight	Radome Color
5.0" H x 3.2" D (126 H x 81 mm)	7.5" L x 4.4" W x 3.8" D (190 L x 112 x 96 mm)	0.6 lbs (0.3 kg)	1.9 lbs (0.9 kg)	White

### Environmental Specifications

Temperature Range	Humidity
- 40°C to + 85°C	95%

### Mounting

All mounting options fit pipes of 1"-1.45" (25 mm-37 mm) maximum diameter.

Model	Options
GPS-TMG-HR-26N	Antenna Only. Does not include mounting hardware.
GPS-TMG-HR-26NCM	Includes red powder coated collar mount (GPS-TMG-MNT-R)



### Low Noise Amplifier Specifications

<b>Frequency Band (MHz):</b> 1575.42 +/- 1.2 MHz
<b>Amplifier Gain:</b> 26.5 dB +/- 3 dB
<b>Nominal Impedance:</b> 50 ohms
<b>Output VSWR:</b> < 2.0:1
<b>Noise Figure (including pre-selector):</b> ≤ 4.0 dB @ +25°C (typ.) ≤ 4.5 dB @ +25°C (max.)
<b>Operating DC Voltage:</b> 3.3- 12.0 V (regulated)
<b>Survival DC Voltage:</b> 24V
<b>DC Current:</b> ≤ 40 mA @ 5V
<b>Filtering:</b> 4-stage filtering including pre-selector
<b>Out-of-Band Rejection:</b> ≥ 65 dB @ 1559 MHz ≥ 65 dB @ 1625 MHz

\*Special order. Please contact PCTEL Customer Service for ordering detail and additional mounting options