



ENS500EXT-AC
ENS500-AC
EnStation5-AC
EnStationAC
ENH500v3

EnSky Outdoor

Advanced 11ac Wave 2 PtP/MP AP's & Bridges

EnGenius Outdoor Access Point and Bridges turbocharge high bandwidth wireless speed, coverage, and reliability in point-to-point and point-to-multipoint connections. It makes powerful, next generation Wave 2, business-class Wi-Fi affordably accessible for small to mid-size businesses and large residences.

EnGenius EnJet™ 5 GHz Outdoor 802.11ac Wave 2 Wireless Access Point/Bridge that features 'Time Division Multiple Access' cuts through RF-congested environments by dividing a signal into different time slots and assigning them to every stations for Point-to-Point/MultiPoint applications.

Optimizes Maximum Airtime Efficiency

EnJet™ features 'Time Division Multiple Access' technology provides steady maximum throughput and high link reliability by dividing a signal into different time slots and assigning them to every stations even when bandwidth demands increase and devices are added. EnJet™ reduces collisions and interference when devices can't "see" one another on a channel when transmitting to the same device at the same time. The EnJet™ AP & Bridge built-in Quality of Service prioritizes video and voice transmissions for a strong, uninterrupted streaming with low latency.

Turbocharged Wireless Performance

Reaching speeds up to 867 Mbps on the 5 GHz frequency band, the EnStationAC's powerful Qualcomm® processor turbocharges wireless performance and efficiency

EnSky

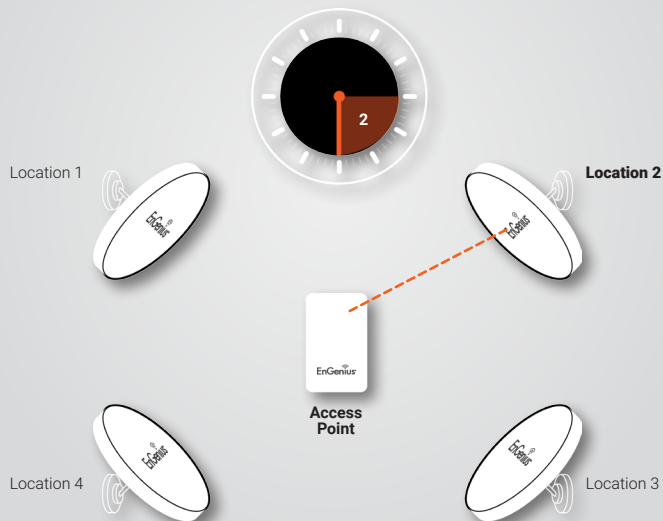
Features & Benefits

- EnJet features 'Time Division Multiple Access' technology that cuts through RF-congested environments within point-to-point/multipoint applications.
- 11ac Wave 2 wireless speeds up to 867 Mbps on 5 GHz
- High 26 dBm transmit power extends Wi-Fi to yard or building-to-building.
- MU-MIMO improves performance & increases user device capacities.
- Beamforming optimizes antenna signal, reception & reliability for clients.
- IP55-Rated weatherproof & dustproof housing
- GigE PoE port & adapter included for placement where power is limited. Use the EnStationAC's secondary PoE pass through Gigabit port to power an additional PoE-compliant device such as an IP surveillance camera.9
- High Gain 19 dBi Integrated Directional Antennas extends wireless networks up to 5 miles point-to-point.
[Model Number: EnStationAC and EnStation5-AC]
- High Gain 14 dBi Integrated Directional Antennas extends wireless networks up to 2 miles point-to-point.
[Model Number: ENS500-AC]
- High Gain 16 dBi Integrated Directional Antennas wireless networks up to 5 miles Point-to-Point
[Model Number = ENH500v3]
- Two detachable, 5 dBi 360° SMA-type antenna.
[Model Number: ENS500EXT-AC]
- 3-Axis pivoting arm locks for precise alignment.
[Model Number: EnStationAC and EnStation5-AC]
- Includes a suite of advanced AP management & security features
- Flexible Operation Modes: AP, Client Bridge & WDS
- Simple, Intuitive interface via EnWiFi app for local AP configuring & monitoring.
- Remotely & centrally manage via EnGenius Managed Switches, SkyKey Mini-controller or ezMaster™ software

EnJet™ Features 'Time Division Multiple Access' Technology

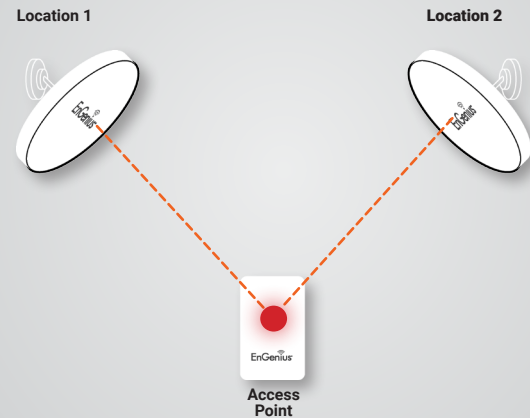
Optimized Maximum Airtime Efficiency

By dividing a signal into different time slots and assigning them, the EnJet™ system provides steady maximum throughput and high link reliability to every client—even when bandwidth demands increase & devices are added.



Avoids Hidden Node Issues

No more collisions and interferences caused by devices that can't "see" each other on a channel & transmit simultaneously.

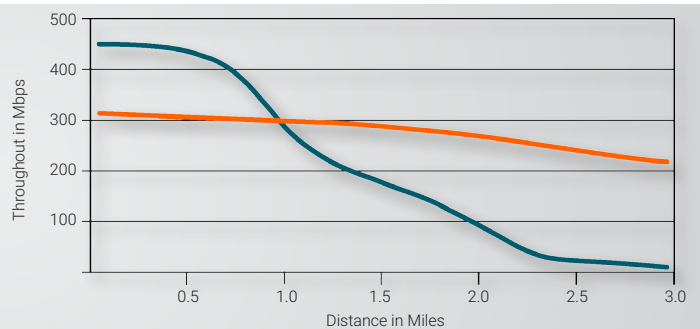


Data Transmission Collisions

Retain Stable Performance

With EnJet™ you can keep the total throughput consistently high while even when the number of wireless stations increase in your outdoor network department

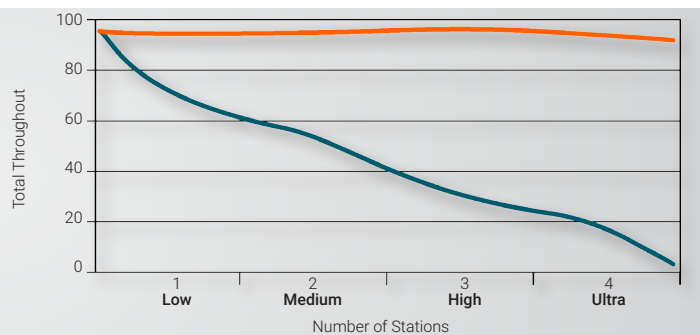
With EnJet
Without EnJet



Steady, Uninterrupted Streaming

EnJet provides steady maximum throughput over long distances. Ideal for Video & Voice transmission for strong, uninterrupted streaming with low latency.

With EnJet
Without EnJet



Prioritize Your Important Data

Achieve the speed your network needs for its most critical applications. Voice transmissions are latency-intensive and slotted at a higher priority than video recordings. Both receive higher priority than HTML pages.



Improve wireless performance to outdoor areas and point-to-point by replacing your old wireless with new, advanced 11ac Wave 2 Technology.



Improved Signal Reliability

Beamforming Antenna technology directs and adjusts signal beams ensuring optimal signal and reception reliability for users moving through outdoor coverage areas.



Increased User Capacities

Multi-User (MU) MIMO sends dedicated wireless streams to multiple user devices at the same time, improving your network's efficiency.

Outdoor Access Points

Provide broad-reaching, fast 11ac Wave 2 access to users in a variety of settings. EnJet™ Outdoor APs are flexible and small enough for use in either indoor or outdoor environments. Achieve high-powered, long-range connections with integrated or detachable antenna options.

Create Wi-Fi Hot-Spots

The ENS500EXT-AC with EnGenius' sector antennas to create a powerful wireless base station with 120° sector-wide coverage. Offer high-capacity, long-range, point-to-multipoint coverage and create large Wi-Fi hotspots for:

- Outdoor Shopping Centers
- Warehouses & Arenas
- Campus Quads & Stadiums
- Campgrounds & Marinas
- Outdoor Theaters & Recreational Facilities
- Internet Service Provider

Outdoor Long-Range Bridges

Extend the wireless network in locations where cabling is not possible or practical while eliminating the expense of extended cable runs. Connect a secondary device such as an IP surveillance camera or access point for greater deployment flexibility.

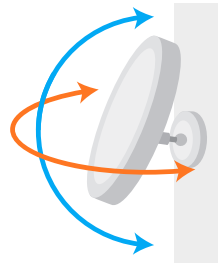
Deliver precise short and long-range point-to-point links in settings such as:

- Between Buildings
- Across Large Campuses & Stadiums
- Over Vast Acreage: Parks, Golf Courses, Ranches
- City Blocks, Parking Lots & Marinas
- In Sizeable Indoor Structures: Distribution Centers & Arenas



EnStation-AC & EnStation5-AC: Precise, Long-Range Point-to-Point Connectivity

The EnJet™ EnStation-AC & EnStation5-AC offers high 26 dBm output power and high receive sensitivity. This coupled with its embedded 19 dBi high-gain directional antennas that emit a narrow signal beam, deliver stable connectivity, optimal bandwidth and high-speed data rates over extremely long distances – up to 5 miles in clear, line of sight point-to-point deployments.

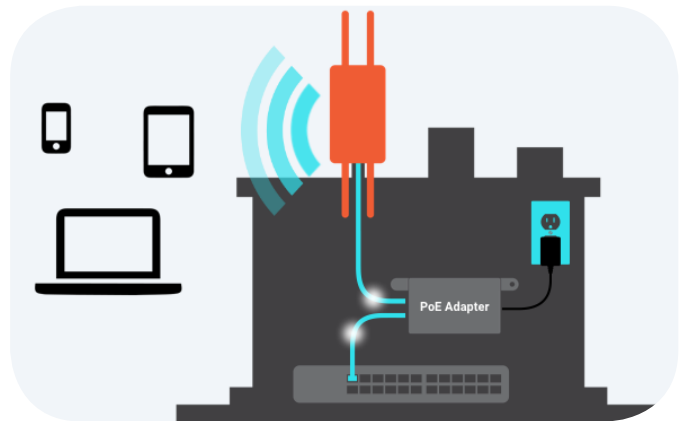


Position for Maximum Connectivity

Easily position EnStation5-AC/EnStationAC for maximum connectivity with its 360-degree, 3-axis pivoting arm that locks in place to ensure precise alignment between other EnStation5-AC/EnStationAC devices.

PoE Supports Flexible Power Options

Connect and power EnJet™ Outdoor APs and Bridges via their dual-PoE Gigabit ports and included PoE Adapter for placement in locations where power outlets are unavailable such as on roofs, poles or other remote areas.



Flexible Operation & Configuration Options

Access Point, Client Bridge, and WDS mode configurations broaden the Outdoor APs and Bridge's adaptability to your network needs. With multiple operation modes, these flexible devices offer versatility in point-to-point or point-to-multipoint deployments.

Optimal Performance in Harsh Environments

EnJet™ Outdoor APs and Bridges are designed to perform in harsh conditions and feature ruggedized IP55-rated enclosures. Ensure your network operates in extreme outdoor climates and indoor industrial environments where temperature is a factor. EnJet™ is protected from prolonged exposure to sunlight, cold, frost, snow, rain, hail, heat and humidity.

EnSky Network Management Solution

The EnJet outdoor can operate as a stand-alone AP or as part of EnGenius Wireless Network Management Solution, locally managed by EnWiFi app, locally managed by EnGenius Switch (monitor only when EnJet™ disabled), centrally managed by SkyKey and ezMaster™ (monitor only when EnJet disabled). Users can get an overall view of their network or dive into the most granular data from via ezMaster or SkyKey..

Management via EnWiFi Mobile Application

Easily install, configure and manage EnStationAC with the intuitive EnWiFi mobile app. With EnWiFi app, you can easily configure a single or group of EnJet outdoor AP, view the status of your EnGenius wireless network at a glance, quickly identify healthy or offline EnJet outdoor devices.

Management via EnSky Switch

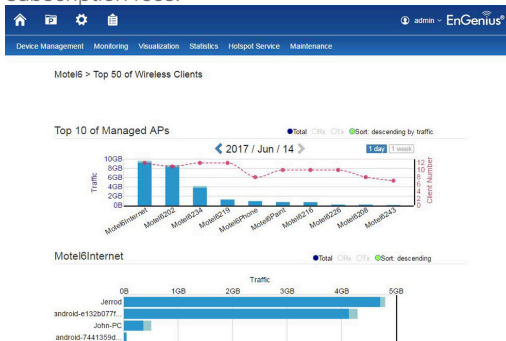
Any EnGenius Gigabit Managed Switch can manage up to 50 EnSky indoor and outdoor. APs. Through the switch, gain access to all connected EnGenius APs and a full array of wireless and Layer 2 management tools. Choose between 8/24/48 Ports PoE+ switch models with flexible deployment and management options with no AP license or subscription fees.

Local & Remote Network Management via SkyKey Mini-Controller or ezMaster Software

The SkyKey mini-controller is an integrated computer with ezMaster Network Management Software. It features Qualcomm® Qual-Core processor with 1GB DRAM and 4GB eMMC flash. No need for a dedicated server or computer, simply connect the SkyKey to a PoE (802.3af) switch port and locally manage up to 100 EnSky Access Points and switches.

EnGenius ezMaster Software's simple, intuitive Web-based interface allows flexible access point monitoring locally or remotely. Quickly and easily set up, manage, monitor, and troubleshoot multiple APs at the same time. See real-time network performance and monitor AP traffic through ezMaster's at-a-glance dashboard.

ezMaster provides business-class features, unlimited scalability and centralized management of hundreds of EnGenius access points and switches locally, remotely or via a cloud-based service with no licensing or subscription fees.



ezMaster Software Features

- **Centralized Management**
 - Configure, Manage & Monitor
 - Cross-Network AP Management
 - AP Group Configuration
- **Access Point Configuration & Management**
 - Band Steering (Auto Band Steering & Band Balancing)
 - Client Isolation
 - Client Limiting
 - Fast Roaming
 - L2 Isolation
 - LED On/Off Control
 - Multiple SSID
 - RSSI Threshold
 - Secure Guest Network
 - Traffic Shaping
 - VLAN Isolation
 - VLAN Tag
- **Comprehensive Monitoring**
 - Device Status Monitoring
 - Floor Plan View
 - Map View
 - System Status Monitoring
 - Visual Topology View
 - Wireless Client Monitoring
 - Wireless Coverage View
 - Wireless Traffic & Usage Statistics
- **Management & Maintenance**
 - Bulk Firmware Upgrade
 - Email Alert
 - Kick/Ban Clients
 - One-Click Update
 - Remote Logging
 - Seamless Migration
 - Syslog

System Requirements

Recommended environment for managing up to 500 APs

CPU: Intel® Core™ i7 quad-core or above
RAM: 4 GB minimum
HDD: 500 GB (actual requirement dependent on log size)
OS: Microsoft® Windows® 7 or later + VMware® Player 7.0 or compatible virtualization software

Recommended environment for managing up to 1,000+ APs

CPU: Intel® Xeon® Processor E3 or above
RAM: 4 GB minimum
HDD: 500 GB (actual requirement dependent on log size)
OS: Microsoft® Windows® 7 or later + VMware® Player 7.0 or compatible virtualization software

Browser Requirements

Internet Explorer 10 or better
Firefox 34.0 or better
Chrome 31.0 or better
Safari 8.0 or better

Network Topology Requirements

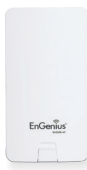
At sites where APs are deployed: A DHCP-enabled network for APs to obtain an IP address

Access Point



Models	ENS500EXT-AC
Standard	802.11ac Wave 2
Frequency	5 GHz
Max. Data Rates	867 Mbps
Radio Chains/Streams	2 x 2:2
Transmit Power	26 dBm
Ethernet Ports	2x Gigabit PoE
Power-over-Ethernet	24V Propriety PoE
Power Consumption (Peak)	6.3W
Antennas	2 x 5 dBi Omni-Directional SMA-Type (Detachable)
Ingress Protection Rating	55

Bridges



Models	EnStationAC	EnStation5-AC	ENS500-AC	ENS500v3
Standard	802.11ac Wave 2	802.11ac Wave 2	802.11ac Wave 2	802.11ac Wave 2
Frequency	5 GHz	5 GHz	5 GHz	5 GHz
Max. Data Rates	867 Mbps	867 Mbps	867 Mbps	867 Mbps
Streams	2 x 2:2	2 x 2:2	2 x 2:2	2 x 2: 2
Transmit Power	26 dBm	26 dBm	26 dBm	27 dBm
Ethernet Ports	2x Gigabit PoE (Secondary PoE Pass Through Gigabit Port)	2x Gigabit PoE	2x Gigabit PoE	2x Gigabit PoE
Power-over-Ethernet	802.3 at	24V Propriety PoE	24V Propriety PoE	24V Propriety PoE
Power Consumption (Peak)	8.3W	6.3W	6.3W	8.9W
Antennas	19 dBi Directional (Integrated)	19 dBi Directional (Integrated)	14 dBi Directional (Integrated)	16 dBi Directional (Integrated)
Ingress Protection Rating	55	55	55	55

Technical Specifications

Standards			ESD Protection			Channelization		
IEEE802.11a/n/ac on 5 GHz			Contact: 4 KV			802.11ac Supports Very High Throughput (VHT)—VHT 20/40/80 MHz		
Processor			Air: 8 KV			802.11n Supports High Throughput (HT)—HT 20/40 MHz		
Qualcomm®			Wireless & Radio Specifications			802.11n/ac Packet Aggregation: AMPDU, ASPDU		
Antenna			Operating Frequency			Supported Modulation		
EnStation5-AC			5 GHz			802.11a/n: BPSK, QPSK, 16-QAM, 64-QAM		
2 x 19 dBi Directional Integrated			Operation Modes [EnJet Disable]			802.11ac: BPSK, QPSK, 16-QAM, 64-QAM, 256-QAM		
EnStation5-AC			Access Point Mode (AP mode)			Management		
2 x 19 dBi Directional Integrated			Client Bridge Mode (CB Mode)			Multiple BSSID		
ENS500EXT-AC			WDS: WDS AP, WDS Bridge, WDS Station			Supports 8 SSIDs [EnJet Disable]		
2 x 5 dBi Omni-Directional Detachable (SMA-Type)			Operation Modes [EnJet Enable]			Supports 1 SSID [EnJet Enable]		
ENS500-AC			Access Port Mode (AP Mode)			VLAN Tagging		
2 x 14 dBi Directional Integrated			Client Bridge Mode (CB Mode)			Supports 802.1q SSID-to-VLAN Tagging		
ENS500v3			WDS: WDS AP and WDS Station			Management VLAN		
2 x 16 dBi Directional Integrated			Frequency Radio			VLAN Pass-Through		
Physical Interface			5 GHz: 5180 MHz~5260 MHz, 5280 MHz~5320 MHz, 5500 MHz~5745 MHz, 5765 MHz~5805 MHz			Spanning Tree		
2 x 10/100/1000 Gigabit Ethernet Ports			Transmit Power			Supports 802.1d Spanning Tree Protocol		
Reset Button			ENS500-AC, ENS5-AC, EnStationAC, ENH500EX-AC			QoS (Quality of Service)		
LED Indicators			5 GHz: 26 dBm			Complaint With IEEE 802.11e Standard		
ENS500EXT-AC/ENS500-AC			ENH500v3			WMM		
Power			5 GHz: 27 dBm			SNMP		
LAN 1			Tx Beamforming (TxBF)			v1, v2c, v3		
LAN 2			Radio Chains/Spatial Stream			MIB		
WLAN			2x2:2			I/II, Private MIB		
Signal			SU-MIMO			Management Features		
EnStation5-AC/EnStationAC			Two(2) spatial streams SU-MIMO for 5GHz up to totally 867 Mbps wireless data rate to a single 11ac wireless client device under 5GHz radio.			Deployment Options		
Power			MU-MIMO			Stand-Alone (Individually Managed/EnWiFi App)		
WLAN			Two(2) spatial streams multi-user (MU)-MIMO for up to 867 Mbps wireless data rate to transmit to one(1) two streams MU-MIMO 11ac capable wireless client devices under 5GHz simultaneously..			Managed Mode (w/ezMaster/EWS Series Switch/ Skykey)		
LAN			Supported Data Rates (Mbps)			Stand-Alone Management Features		
ENH500v3			5 GHz: Max 867 Mbps			Auto Channel Selection		
Power			802.11a: 6, 9, 12, 18, 24, 36, 48, 54			Auto Transmit Power		
LAN			802.11n: 6.5 to 300 Mbps (MCS0 to MCS15)			Wireless STA (Client) Connected List		
WLAN			802.11ac: 6.5 to 867 Mbps (MCS0 to MCS9, NSS = 1 to 2)			Guest Network (Support When EnJet Disabled)		
Link Quality			Supported Radio Technologies			Fast Roaming (802.11k & 802.11r)		
Power Source			802.11a/n/ac: Orthogonal Frequency-Division Multiplexing (OFDM) [EnJet Disabled]			Pre-Authentication (802.11i, 802.11x)		
Power-over-Ethernet: Proprietary 24V PoE			802.11 n/ac: Time Division Multiple Access [EnJet Enabled]			PMK Caching (802.11i)		
IEEE 802.11e Compliant Source			802.11n/ac: 2x2 MIMO With 2 Streams			RSSI Threshold		
Active Ethernet (PoE)			Supported Data Rates (Mbps)			Traffic Shaping		
Maximum Power Consumption			5 GHz: Max 867 Mbps			VLANs for Access Point – Multiple SSIDs		
ENS500EXT-AC/ENS500-AC/EnStation5-AC			802.11a: 6, 9, 12, 18, 24, 36, 48, 54			Backup/Restore Settings		
EnStationAC			802.11n: 6.5 to 300 Mbps (MCS0 to MCS15)			Auto Reboot		
ENH500v3			802.11ac: 6.5 to 867 Mbps (MCS0 to MCS9, NSS = 1 to 2)			E-Mail Alert		
Surge Protection			Supported Radio Technologies			Site Survey		
Line to Line: 1 KV			802.11a/n/ac: Orthogonal Frequency-Division Multiplexing (OFDM) [EnJet Disabled]			Save Configuration as Users Default		
Line to Ground: 2 KV			802.11 n/ac: Time Division Multiple Access [EnJet Enabled]					
			802.11n/ac: 2x2 MIMO With 2 Streams					

Technical Specifications

Control Features

Operation Mode
Distance Control (ACK Timeout)
Multicast Supported
Wi-Fi Scheduler
Client Traffic Status
RADIUS Accounting
Power Save Mode (U-APSD Support)
CLI Support
HTTPS

Wireless Security

WPA2 PSK & Enterprise (AES)
Hide SSID in Beacons
MAC Address Filtering, Up to 32 MACs per SSID
Wireless STA (Client) Connected List
SSH Tunnel
Client Isolation

Wireless Management Features (w/ezMaster & EWS Switch) (Available in AP Mode) (Monitor When EnJet Enabled) (Support When EnJet Disabled)

AP Auto Discovery and Provisioning
AP Auto IP Assignment
AP Group Management
Auto AP Rebooting
AP Device Name Editing
AP Radio Settings
Traffic Shaping
Fast Roaming (802.11k & 802.11r)
Pre-Authentication (802.11i, 802.11x)
PMK Caching (802.11i)
RSSI Threshold
AP Client Limiting
Client Fingerprinting
AP VLAN Management
VLANs for AP - Multiple SSIDs
Secured Guest Network
Access Point Status Monitoring
Wireless Client Monitoring
Email Alert
Wireless Traffic & Usage Statistics
Real-Time Throughput Monitoring
Visual Topology View
Floor Plan View
Map View
Wireless Coverage Display
Secure Control Messaging (SSL Certificate)
Local MAC Address Database
Remote MAC Address Database (RADIUS)

Unified Configuration Import/Export
Bulk Firmware Upgrade Capability
Intelligent Diagnostics
Kick/Ban Clients
Wi-Fi Scheduler

Temperature Range

Operating: -4° F~140° F (-20° C~60° C)
Storage: -22° F~176° F (-30° C~80° C)

Humidity (non-condensing)

Operating: 90% or less
Storage: 90% or less

Waterproof

IP55-Rated Enclosure

Dimensions & Weights

ENS500EXT-AC/ENS500-AC
Weight: 0.65 lbs. (0.29 kg)
Width: 3.93" (100 mm)
Length: 7.20" (185 mm)
Height" 1.08" (27 mm)

EnStation5-AC/EnStationAC

Weight: 1.11 lbs. (460 g)
Depth: 7.48" (190 mm)
Height: 1.49" (38 mm)

ENH500v3

Weight: 0.91 lbs. (415.5 g)
Width: 3.31" (84 mm)
Length: 10.24" (260 mm)
Height: 2.17" (55 mm)

Package Contents

ENS500EXT-AC
ENS500EXT-AC Outdoor Access Point
PoE Adapter (EPA2406GP)
PoE Adapter (EPA2406GP)
PoE Adapter (EPA2406GP)
PoE Adapter (EPA2406GP)
PoE Adapter (EPA2406GP)
PoE Adapter (EPA2406GP)
PoE Adapter (EPA2406GP)
ENS500-AC
ENS500-AC Outdoor Bridge
PoE Adapter (EPA2406GP)
Pole-Mounting Brackets
Wall-Mount Screw Set

Power Cord
Quick Installation Guide

EnStation5-AC

EnStation5-AC Outdoor Wireless Bridge
PoE Adapter (EPA2406GP)
Pole-Mounting Brackets
Wall-Mount Screw Set

Power Cord
Quick Installation Guide

EnStationAC

EnStation5-AC Outdoor Wireless Bridge
PoE Adapter (EPA5000GR)
Pole-Mounting Brackets
Wall-Mount Screw Set

Power Cord
Quick Installation Guide

ENH500v3

PoE Adapter (EPA2406GP)
Pole-Mounting Brackets
Pole-Mounting Strap
Pole-Mounting Strap
Quick Installation Guide

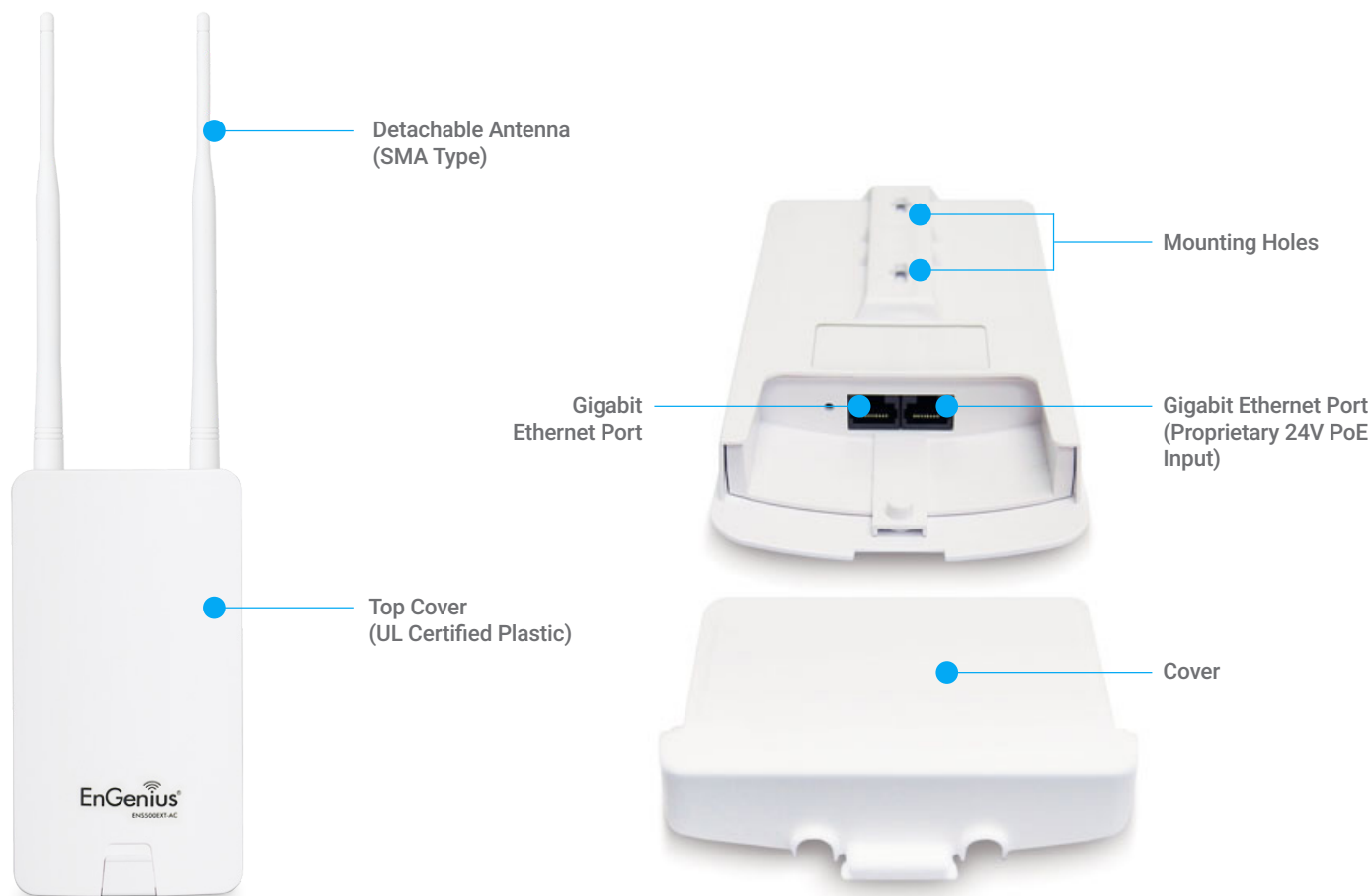
Certifications

FCC, CE

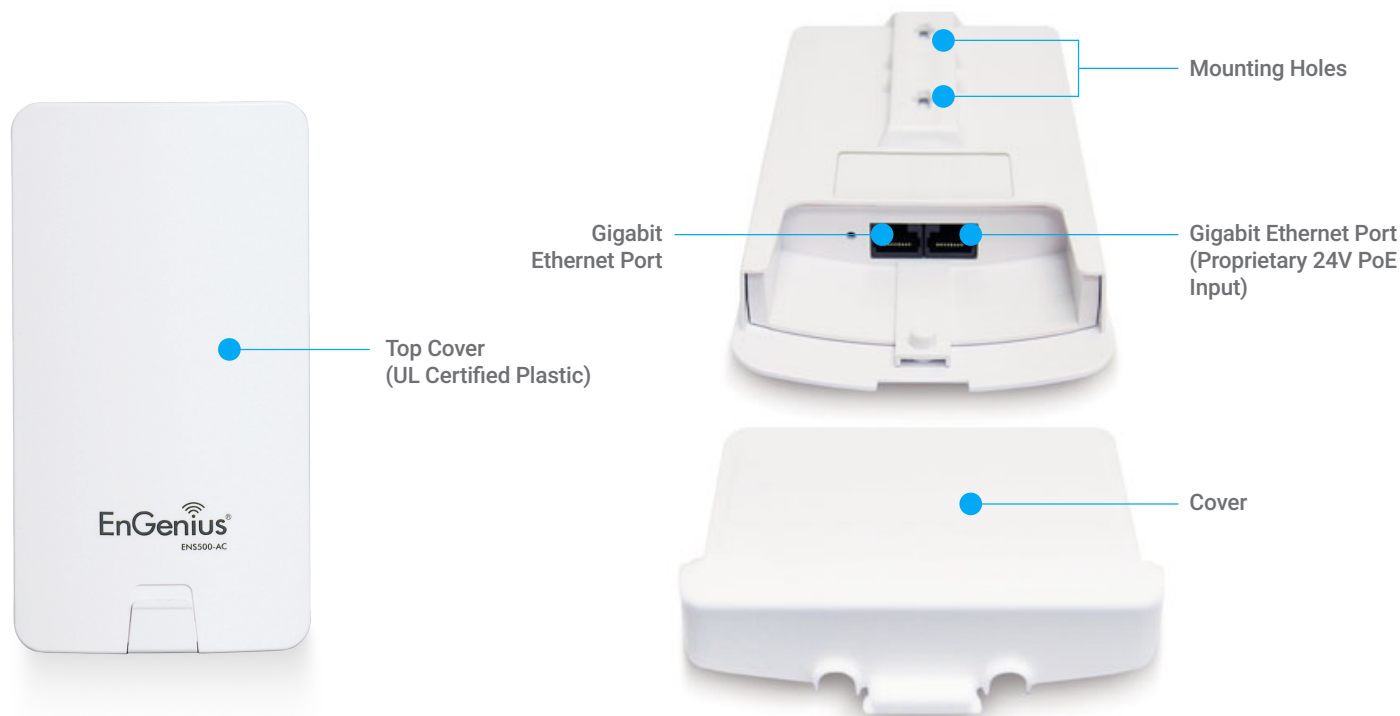
Warranty

1-Year Standard

ENS500EXT-AC Outdoor Access Point



ENS500-AC Outdoor Bridge



EnStation5-AC/EnStationAC Outdoor Bridge



Maximum data rates are based on IEEE 802.11 standards. Actual throughput and range may vary depending on distance between devices or traffic and bandwidth load in the network.

EnGenius Technologies | 1580 Scenic Ave. Costa Mesa, CA 92626
Email: partners@engeniustech.com | Website: engeniustech.com
Version 1.0 01/10/2020

Features and specifications subject to change without notice. Trademarks and registered trademarks are the property of their respective owners. For United States of America: Copyright © 2020 EnGenius Technologies, Inc. All rights reserved.