

# Coax Mounting Accessories



## Nello Stackable Hangers

<b>Material</b>	Stainless steel	<b>Design:</b>	Stackable design
<b>Included:</b>	hanger and latch	<b>Mounts to:</b>	3/4" hole
<b>Order</b>	n/a		
<b>Separately:</b>			



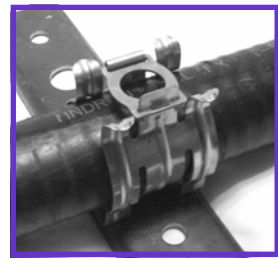
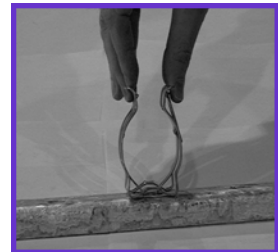
Part #	Description	Weight (Lbs)
100341	1-5/8" Nello Stackable Snap-In, 10 pack	2.0
100272	1-5/8" Nello Stackable Snap-In, 100 pack	20.0

Coax Mounting Accessories

### Product Description

The Nello Patent Pending hanger is designed to attach and support a variety of brands of coaxial cable to support members .120" to .150" thick with 3/4" diameter holes. The unique design of the Nello™ hanger allows easy installation of the snap-in hanger first, which also provides easy installation of the coax. The Nello™ hanger is also stackable, reducing the need for additional support brackets.

1. Squeeze center tabs of the Nello™ hanger together and insert into 3/4" hole of support member. Then squeeze center tabs at the opening to fully snap the hanger into the support member making sure both tabs are engaged securely. (see photos #1 and #2)
2. Install coax into the Nello™ hanger and latch retainer making sure that the retainer is pushed past the locking tab. (see photos #3 and #4)
3. To Stack, repeat steps #1 and #2 using the 3/4" hole on the retainer latch on the installed Nello™ hanger. (see photos #5 and #6) Do not stack more than two 1-5/8" coaxial lines.



# Coax Mounting Accessories



## Snap-In Hangers



<b>Material</b>	Stainless steel	<b>Design:</b>	One piece hanger design
<b>Included:</b>	hanger.		
<b>Order</b>	n/a	<b>Mounts to:</b>	3/4" holes
<b>Seperately:</b>			

Part #	Description	Weight (Lbs)
100715	1/2" Snap-In Hanger (10 pack)	0.7
100716	7/8" Snap-In Hanger (10 pack)	1.2
100717	1-1/4" Snap-In Hanger (10 pack)	1.3
100718	1-5/8" Snap-In Hanger (10 pack)	1.5
100719	2-1/4" Snap-In Hanger (10 pack)	1.7

Coax Mounting Accessories

## Butterfly Hangers



<b>Material</b>	Stainless steel	<b>Design:</b>	Bolt-on single run hanger
<b>Included:</b>	hanger and set bolts		
<b>Order</b>	Hanger bracket	<b>Mounts to:</b>	7/16" hole
<b>Seperately:</b>	kits		

Part #	Description	Weight (Lbs)
108318	1/2" Butterfly Hanger, Hardw are Included (10 pack)	1.3
108319	7/8" Butterfly Hanger, Hardw are Included (10 pack)	1.5
109849	1-1/4" Butterfly Hanger, Hardw are Included (10 pack)	1.1
108320	1-5/8" Butterfly Hanger, Hardw are Included (10 pack)	1.8
109850	2-1/4" Butterfly Hanger, Hardw are Included (10 pack)	1.5

## Hanger Hardware Kits



<b>Material</b>	Stainless steel	<b>Design:</b>	Hardw are kit for hanger attachment
<b>Included:</b>	bolt and washer w / optional nut		
<b>Order</b>	Hangers	<b>Mounts to:</b>	n/a
<b>Seperately:</b>			

Part #	Description	Weight (Lbs)
100726	3/8" x 1/2" Fillister Head Screw s and Lock Washers (10 Pack)	0.6
100727	3/8" x 3/4" Fillister Head Screw s, Lock Washers, and Nuts (10 Pack)	0.6
100728	3/8" x 1" Fillister Head Screw s, Lock Washers, and Nuts (10 Pack)	0.7

# Coax Mounting Accessories



## Lace-Up Hoisting Grips

<b>Material</b>	Tinned bronze	<b>Design:</b>	Mesh grip with single eye support
<b>Included:</b>	grip, clip and tape	<b>Mounts to:</b>	n/a
<b>Order Separately:</b>	n/a		



Part #	Description	Weight (Lbs)
101259	Hoisting Grip to suit 1/2" cable - Lace Up	0.3
101260	Hoisting Grip to suit 7/8" cable - Lace Up	0.2
101261	Hoisting Grip to suit 1-1/4" cable - Lace Up	0.2
101262	Hoisting Grip to suit 1-5/8" cable - Lace Up	1.3
101263	Hoisting Grip to suit 2-1/4" cable - Lace Up	1.3

## Pre-Laced Hoisting Grips

<b>Material</b>	Tinned bronze	<b>Design:</b>	Mesh grip with single eye support
<b>Included:</b>	grip, clip and tape	<b>Mounts to:</b>	n/a
<b>Order Separately:</b>	n/a		



Part #	Description	Weight (Lbs)
101254	Hoisting Grip to suit 1/2" cable - Pre Laced	0.4
101255	Hoisting Grip to suit 7/8" cable - Pre Laced	0.5
101256	Hoisting Grip to suit 1-1/4" cable - Pre Laced	0.5
101257	Hoisting Grip to suit 1-5/8" cable - Pre Laced	1.3
101258	Hoisting Grip to suit 2-1/4" cable - Pre Laced	1.3

# Coax Mounting Accessories



## Stand-Off Adaptors, Universal

<b>Material</b>	Stainless steel	<b>Design:</b>	Adapts hangers to round members
<b>Included:</b>	stand-off, avail. w/o round member adapter	<b>Mounts to:</b>	1-1/2" to 6" OD
<b>Order Separately:</b>	Snap-ins		



Part #	Description	Weight (Lbs)
100693	Stand-Off Adaptor, Universal, 1-1/2" - 3" OD (10 pack)	3.7
100694	Stand-Off Adaptor, Universal, 2" - 3" OD (10 pack)	3.9
100695	Stand-Off Adaptor, Universal, 3" - 4" OD (10 pack)	4.1
100696	Stand-Off Adaptor, Universal, 4" - 5" OD (10 pack)	4.2
100697	Stand-Off Adaptor, Universal, 5" - 6" OD (10 pack)	4.2
100698	Stand-Off Adaptor, Universal, (10 pack)	2.9

Coax Mounting Accessories

## Stand-Off Adaptors

<b>Material</b>	Stainless steel	<b>Design:</b>	Adapts hangers to round members
<b>Included:</b>	stand-off, avail. w/o round member adapter	<b>Mounts to:</b>	1-1/2" to 6" OD
<b>Order Separately:</b>	Hangers		



Part #	Description	Weight (Lbs)
100701	Stand-off Adapter, 3/8" Hardw are, 1" - 2" OD (10 Pack)	3.6
100702	Stand-Off Adapter, 3/8" Hardw are, 2" - 3" OD (10 pack)	3.8
100703	Stand-Off Adapter, 3/8" Hardw are, 3" - 4" OD (10 pack)	4.0
100704	Stand-off Adapter, 3/8" Hardw are, 4" to 5" OD (10 pack)	4.1
100705	Stand-Off Adapter, 3/8" Hardw are, 5" to 6" OD Members (10 pack)	4.1
100706	Stand-Off Adapter, 3/8" Hardw are, (10 pack)	2.8

# Coax Mounting Accessories



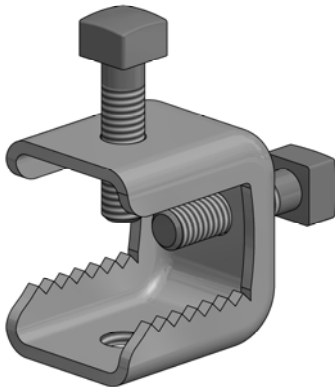
## Angle Adaptors, Universal



<b>Material</b>	Stainless steel	<b>Design:</b>	Adapts hangers to angle members
<b>Included:</b>	adapter, hardware and insert	<b>Mounts to:</b>	Up to 7/8" angle
<b>Order Separately:</b>	n/a		

Part #	Description	Weight (Lbs)
104157	Angle Adaptors, Universal (10 pack)	4.9

## Angle Adaptors, 3/8" Tapped Hole



<b>Material</b>	Stainless steel	<b>Design:</b>	Adapts Hangers to angle members
<b>Included:</b>	adapter and hardware	<b>Mounts to:</b>	Up to 7/8" angle
<b>Order Separately:</b>	Hangers		

Part #	Description	Weight (Lbs)
100669	Angle Adapter, 3/8" Tapped Hole (10 pack)	5.4

Coax Mounting Accessories



# Coax Mounting Accessories



## Round Member Adaptors



<b>Material</b>	Stainless steel	<b>Design:</b>	Screw used for tightening
<b>Included:</b>	hose clamp	<b>Mounts to:</b>	1-1/2" to 6" OD
<b>Order</b>	Hangers		
<b>Seperately:</b>			

Part #	Description	Weight (Lbs)
100721	Round Member Adapter, 1" - 2" (10 pack)	0.8
100722	Round Member Adapter, 2" - 3" (10 pack)	1.0
100723	Round Member Adapter, 3" - 4" (10 pack)	1.2
100724	Round Member Adapter, 4" - 5" (10 pack)	1.3
100725	Round Member Adapter, 5" - 6" (10 pack)	1.3

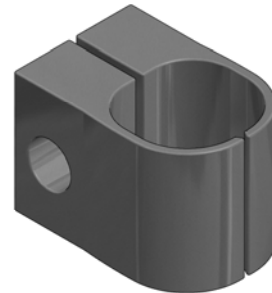
## Coax Support Blocks, Double

<b>Material</b>	Polypropylene	<b>Design:</b>	Supports two runs of coax
<b>Included:</b>	blocks	<b>Mounts to:</b>	3/8" threaded rod
<b>Order</b>	Hanger kits		
<b>Seperately:</b>			



## Coax Support Blocks, Single

<b>Material</b>	Polypropylene	<b>Design:</b>	Supports one run of coax
<b>Included:</b>	blocks	<b>Mounts to:</b>	3/8" threaded rod
<b>Order</b>	Hanger kits		
<b>Seperately:</b>			



Part #	Description	Weight (Lbs)
101540	Coax Support Blocks for 1/2" corrugated coax, double. 10 pack	1.0
101544	Coax Support Blocks for 7/8" corrugated coax, double. 10 pack	1.2
101547	Coax Support Blocks for 1-1/4" corrugated coax, double. 10 pack	1.4
101549	Coax Support Blocks for 1-5/8" corrugated coax, double. 10 pack	1.8

Part #	Description	Weight (Lbs)
101555	Coax Support Blocks for 1/2" corrugated coax, single. 10 pack	0.5
101556	Coax Support Blocks for 7/8" corrugated coax, single. 10 pack	1.0
101557	Coax Support Blocks for 1-1/4" corrugated coax, single. 10 pack	1.3
101558	Coax Support Blocks for 1-5/8" corrugated coax, single. 10 pack	1.8

## Coax Support Blocks Mounting Hardware



<b>Material</b>	3/8" galvanized	<b>Design:</b>	1,2 or 3 runs of coax support
<b>Included:</b>	threaded rod and hardware	<b>Mounts to:</b>	n/a
<b>Order</b>	Coax supports		
<b>Seperately:</b>			

Part #	Description	Weight (Lbs)
104430	3/8" Galvanized Hardware Kit for one Coax Support Block. 10 pack.	1.8
104431	3/8" Galvanized Hardware Kit for two Coax Support Blocks. 10 pack.	2.3
104432	3/8" Galvanized Hardware Kit for three Coax Support Blocks. 10 pack.	2.8

Coax Mounting Accessories

# Coax Mounting Accessories



## Universal Weatherproofing



<b>Material</b>	Butyl and vinyl.	<b>Design:</b>	Tape kit for multi-layer wrap
<b>Included:</b>	Five rolls butyl mastic, one roll 2"x20' and two rolls of 3/4"x44' tape	<b>Order</b>	n/a
<b>Seperately:</b>		<b>Mounts to:</b>	n/a

Part #	Description	Weight (Lbs)
100347	Universal Weather Proofing Kit	3.4

## Universal Ground Kits



<b>Material</b>	Copper ground kit, lugs and weatherproofing kit	<b>Design:</b>	Universal design works with most cable sizes
<b>Order</b>	n/a	<b>Mounts to:</b>	Coax outer conductor
<b>Seperately:</b>			

Part #	Description	Weight (Lbs)
100346	Universal Ground Kit, 5' lead w/ unattached 1/4" & 3/8" tw o-hole lugs.	1.9

## Clip On Ground Kits



<b>Material</b>	Copper clip on strap, ground kit, lug and weatherproofing kit	<b>Design:</b>	One-piece clip on style. Quick installation.
<b>Order</b>	n/a	<b>Mounts to:</b>	Coax outer conductor
<b>Seperately:</b>			

Part #	Description	Weight (Lbs)
101626	Clip-on Ground Kit for 7/8" corrugated coax. 5' lead w ith unattached 3/8" tw o-hole lug.	1.4
101628	Clip-on Ground Kit for 1-1/4" corrugated coax. 5' lead w ith unattached 3/8" tw o-hole lug.	1.4
101630	Clip-on Ground Kit for 1-5/8" corrugated coax. 5'lead w ith unattached 3/8" tw o-hole lug.	1.5
101632	Clip-on Ground Kit for 2-1/4" corrugated coax. 5' lead w ith unattached 3/8" tw o-hole lug.	1.5

## Standard Ground Kits



<b>Material</b>	Copper bolt on strap, ground kit, lug and weatherproofing kit	<b>Design:</b>	Bolt on strap for secure connection.
<b>Order</b>	n/a	<b>Mounts to:</b>	Coax outer conductor
<b>Seperately:</b>			

Part #	Description	Weight (Lbs)
108321	Bolt-on Ground Kit for 3/8" corrugated coax. 5' lead w ith unattached 3/8" tw o-hole lug.	1.8
108322	Bolt-on Ground Kit for 5/8" corrugated coax. 5' lead w ith unattached 3/8" tw o-hole lug.	1.8
108323	Bolt-on Ground Kit for 7/8" corrugated coax. 5' lead w ith unattached 3/8" tw o-hole lug.	1.8
108324	Bolt-on Ground Kit for 1-5/8" corrugated coax. 5' lead w ith unattached 3/8" tw o-hole lug.	1.8

# Coax Mounting Accessories



## 4" Entry Panels

<b>Material</b>	Aluminum port,	<b>Design:</b>	Entry plates
<b>Included:</b>	caps and mounting hardw are.		with round ports
<b>Order</b>	4" boot	<b>Mounts to:</b>	Walls
<b>Seperately:</b>	assemblies		



Part #	Description	Weight (Lbs)
101350	Entry Panel, 1 port, 1x1, Standard	1.0
101351	Entry Panel, 1 port, 1x1, Compact	0.6
101352	Entry Panel, 2 port, 1x2	2.3
101353	Entry Panel, 3 port, 1x3	2.9
101354	Entry Panel, 4 port, 1x4	3.5
101355	Entry Panel, 4 port, 2x2, Standard	4.2
101356	Entry Panel, 4 port, 2x2, Compact	4.0
101357	Entry Panel, 6 port, 2x3	6.1
101358	Entry Panel, 6 port, 1x6	6.0
101359	Entry Panel, 8 port, 2x4, Standard	6.0
101360	Entry Panel, 8 port, 2x4, Large	6.0
101361	Entry Panel, 9 port, 3x3	7.1
101362	Entry Panel, 10 port, 2x5	7.4
101363	Entry Panel, 12 port, 3x4, Standard	8.5
101364	Entry Panel, 12 port, 3x4, Large	7.0
101365	Entry Panel, 12 port, 2x6	0.2
101366	Entry Panel, 16 port, 4x4	9.1
101367	Entry Panel, 18 port, 3x6	13.0
101368	Entry Panel, 20 port, 4x5	11.0
101369	Entry Panel, 24 port, 4x6	15.8

Coax Mounting Accessories

## 4" Boot



Part #	Description	Weight (Lbs)
101439	4" Boot Assembly, cushion not included	1.3

<b>Material</b>	EPDM rubber boot	<b>Design:</b>	Compression
<b>Included:</b>	and two hose clamps		boot kit for aluminum entry panels
<b>Order</b>	4" entry panels	<b>Mounts to:</b>	4" engtry panels
<b>Seperately:</b>	and cushion insert		



# Coax Mounting Accessories



## 4" Boot Kits

<b>Material</b>	EPDM rubber	<b>Design:</b>	Compression
<b>Included:</b>	boot, cushion and two hose clamps		boot kit for aluminum entry panels
<b>Order Separately:</b>	4" entry panels	<b>Mounts to:</b>	4" entry panels

Part #	Description	Weight (Lbs)
101377	Boot Assembly Kit, 4" w / 1 Hole for 1/2" corrugated coax	1.6
101378	Boot Assembly Kit, 4" w / 2 Holes for 1/2" corrugated coax	1.6
101379	Boot Assembly Kit, 4" w / 3 Holes for 1/2" corrugated coax	1.6
101380	Boot Assembly Kit, 4" w / 4 Holes for 1/2" corrugated coax	1.6
101381	Boot Assembly Kit, 4" w / 5 Holes for 1/2" corrugated coax	1.6
101382	Boot Assembly Kit, 4" w / 1 Hole for 1/2" flex coax	1.6
101383	Boot Assembly Kit, 4" w / 2 Holes for 1/2" flex coax	1.6
101384	Boot Assembly Kit, 4" w / 3 Holes for 1/2" flex coax	1.6
101385	Boot Assembly Kit, 4" w / 4 Holes for 1/2" flex coax	1.6
101386	Boot Assembly Kit, 4" w / 1 Hole for 5/8" corrugated coax	1.6
101387	Boot Assembly Kit, 4" w / 2 Holes for 5/8" corrugated coax	1.6
101388	Boot Assembly Kit, 4" w / 3 Holes for 5/8" corrugated coax	1.6
101389	Boot Assembly Kit, 4" w / 1 Hole for 7/8" corrugated coax	1.6
101390	Boot Assembly Kit, 4" w / 2 Holes for 7/8" corrugated coax	1.6
101391	Boot Assembly Kit, 4" w / 3 Holes for 7/8" corrugated coax	1.6
101392	Boot Assembly Kit, 4" w / 4 Holes for 7/8" corrugated coax	1.6
101393	Boot Assembly Kit, 4" w / 1 Hole for 1-1/4" corrugated coax	1.6
101394	Boot Assembly Kit, 4" w / 1 Hole for 1-5/8" corrugated coax	1.6
101395	Boot Assembly Kit, 4" w / 1 Hole for 2-1/4" corrugated coax	1.6



Coax Mounting Accessories

# Coax Mounting Accessories



## Boot Inserts

<b>Material</b>	EPDM rubber	<b>Design:</b>	Compression boot kit for aluminum entry panels
<b>Included:</b>	boot, cushion and two hose clamps		
<b>Order Separately:</b>	4" entry panels	<b>Mounts to:</b>	4" entry panels



## Boot Insert Plugs

<b>Material</b>	EPDM rubber plug	<b>Design:</b>	Plugs for unused insert holes
<b>Included:</b>			
<b>Order Separately:</b>	Boot inserts or assemblies	<b>Mounts to:</b>	Boot inserts

Part #	Description	Weight (Lbs)
101495	Boot Insert Plug for 1/2" corrugated coax	0.1
101499	Boot Insert Plug for 5/8" corrugated coax	0.1
101500	Boot Insert Plug for 7/8" corrugated coax	0.2
101503	Boot Insert Plug for 1-1/4" corrugated coax	0.4
101505	Boot Insert Plug for 1-5/8" corrugated coax	0.7



Part #	Description	Weight (Lbs)
101441	Boot Insert, Blank (no holes)	0.4
101447	Boot Insert with 1 Hole for 1/2" corrugated coax	0.4
101448	Boot Insert with 2 Holes for 1/2" corrugated coax	0.4
101449	Boot Insert with 3 Holes for 1/2" corrugated coax	0.4
101450	Boot Insert with 4 Holes for 1/2" corrugated coax	0.4
101451	Boot Insert with 5 Holes for 1/2" corrugated coax	0.4
101452	Boot Insert with 1 Hole for 1/2" flex coax	0.4
101453	Boot Insert with 2 Holes for 1/2" flex coax	0.4
101454	Boot Insert with 3 Holes for 1/2" flex coax	0.4
101455	Boot Insert with 4 Holes for 1/2" flex coax	0.4
101464	Boot Insert with 1 Hole for 5/8" corrugated coax	0.4
101465	Boot Insert with 2 Holes for 5/8" corrugated coax	0.4
101466	Boot Insert with 3 Holes for 5/8" corrugated coax	0.4
101467	Boot Insert with 4 Holes for 5/8" corrugated coax	0.4
101469	Boot Insert with 1 Hole for 7/8" corrugated coax	0.4
101470	Boot Insert with 2 Holes for 7/8" corrugated coax	0.3
101471	Boot Insert with 3 Holes for 7/8" corrugated coax	0.3
101472	Boot Insert with 4 Holes for 7/8" corrugated coax	0.2
101480	Boot Insert with 1 Hole for 1-1/4" corrugated coax	0.3
101482	Boot Insert with 1 Hole for 1-5/8" corrugated coax	0.3
101483	Boot Insert with 1 Hole for 2-1/4" corrugated coax	0.2

Coax Mounting Accessories