



CMAX-EXT-CPUSEi53

Cell-Max™ Low PIM Directional Outdoor Antenna, 698–960 MHz and 1710–2700 MHz

Electrical Specifications

Frequency Band, MHz	698–800	800–960	1710–2200	2200–2700
Gain, dBi	10.0	11.0	11.0	11.0
Beamwidth, Horizontal, degrees	68	60	60	52
Beamwidth, Vertical, degrees	30.0	28.0	30.0	30.0
Front-to-Back Ratio at 180°, dB	18	18	20	20
VSWR Return Loss, dB	1.8 10.9	1.8 10.9	1.8 10.9	1.8 10.9
PIM, 3rd Order, 2 x 20 W, dBc	-153	-153	-153	-153
Input Power per Port, maximum, watts	100	100	100	100
Polarization	Vertical	Vertical	Vertical	Vertical
Impedance	50 ohm	50 ohm	50 ohm	50 ohm

Product Classification

Brand	Cell-Max™
Product Type	Indoor/outdoor antenna

General Specifications

Antenna Type	Directional
Application	Outdoor
Operating Frequency Band	1710 – 2700 MHz 698 – 960 MHz
Brand	Andrew®
Mount Type	Poles between 30–55 mm with supplied clamps
Number of Ports, all types	1
Package Quantity	1

Mechanical Specifications

Color	White
Radome Material	PVC, UV resistant
RF Connector Interface	7-16 DIN Female
Wind Loading, maximum	686.0 N @ 216 km/h 154.2 lbf @ 216 km/h
Wind Speed, maximum	216 km/h 134 mph

Environmental Specifications

Ingress Protection Test Method	IEC 60529:2001, IP66
Operating Temperature	-40 °C to +60 °C (-40 °F to +140 °F)

CMAX-EXT-CPUSEi53

Relative Humidity Up to 100%

Dimensions

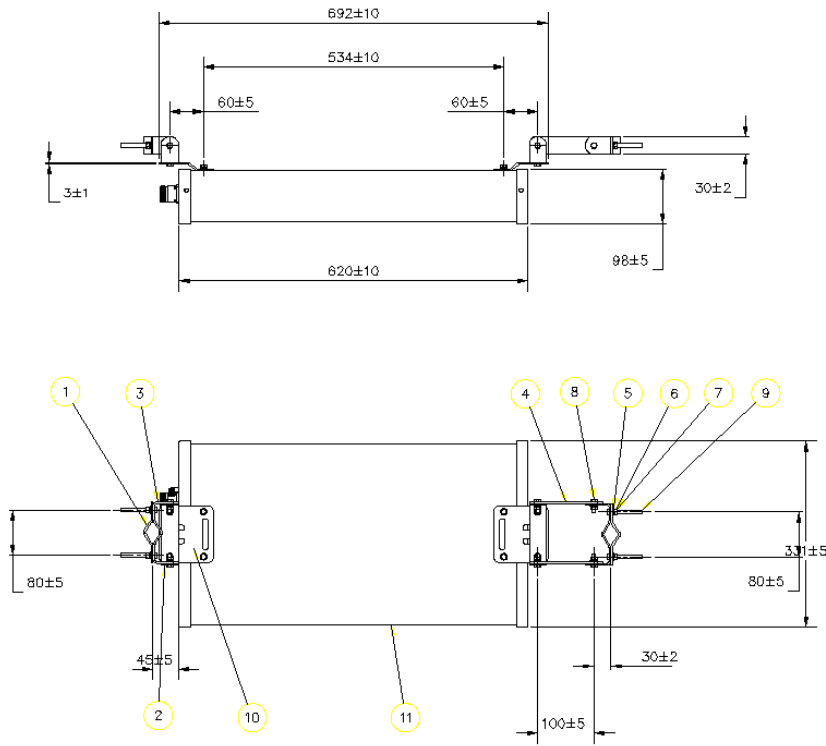
Depth	98.0 mm		3.9 in
Length	620.0 mm		24.4 in
Width	331.0 mm		13.0 in
Net Weight	4.7 kg		10.4 lb

Packed Dimensions

Depth	160.0 mm		6.3 in
Length	830.0 mm		32.7 in
Width	350.0 mm		13.8 in
Shipping Weight	7.4 kg		16.3 lb

CMAX-EXT-CPUSEi53

Outline Drawing



Regulatory Compliance/Certifications

Agency

ISO 9001:2008

Classification

Designed, manufactured and/or distributed under this quality management system