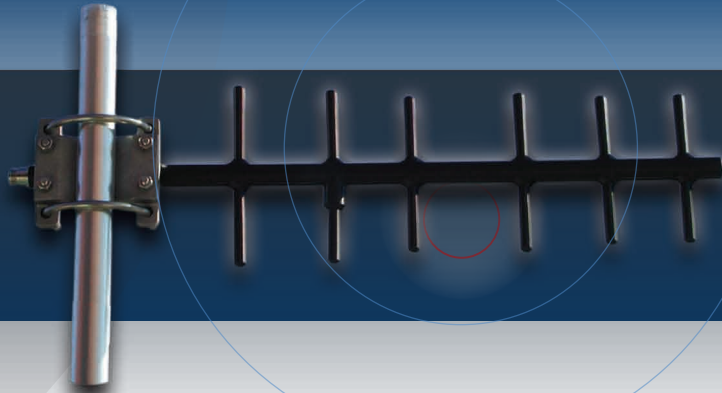


MDS ClearWave™ Antennas

Omni and Yagi Antennas



Features

- High gain
- Heavy duty
- Welded construction
- High grade aluminum (6061-T6)
- Tough Teflon impregnated powder coat finish
- Heavy duty mounting bracket included
- Yagis available with N Female connector standard. Optional factory sealed N Male in 10', 15', and 25' lengths
- Omnis available with N male connector standard

Applications

- Gas/oil production and distribution
- Water, gas and electric utilities
- Lotteries
- Traffic control
- Industrial process control
- Railroad communication systems

GE MDS...Global wireless solutions. Industrial Wireless Performance.

For more than two decades, GE MDS has been providing highly secure, industrial strength mission critical wireless communications solutions for a broad spectrum of public and private sector clients worldwide. With an installed base approaching 1,000,000 radios in 110 countries, GE MDS offers both licensed and license-free solutions with applications in SCADA, telemetry, public safety, telecommunications, and online transaction markets.

MDS ClearWave™ Antennas

MDS ClearWave™ Antenna features:

- Smaller Physical Size - Less wind loading, means higher wind and ice survival ratings
- Increased Gain - Over the previous design
- Acceptance of Larger Masts - Now up to 2.5 in. (6.35 cm)
- An Extended Warranty - Increased to 2 full years
- Teflon Impregnated Double Powder Coat Finish - Standard on all Yagi antennas
- Internally Matched Driven Elements - Improves antenna performance even when icy
- Integral Feedline - More secure and resistant to damage
- Feedline that may be replaced in the field - Simplifies maintenance if needed

MDS ClearWave™ Antenna Product Overview

MDS ClearWave™ Antennas are premium quality antennas engineered for long lasting service. MDS ClearWave™ antennas operate in the 401-470 and 890-960 MHz frequency bands, and there are models available for various gain levels (see listing on the back). The Yagi antennas may be stacked for added gain where required.

MDS ClearWave™ Omni Antennas are fiberglass covered with a 16" pigtail to an "N" type connector. They are rated to 100 mph wind loading.

MDS ClearWave™ Yagi Antennas come standard with an endboom connection (N Female). The MDS ClearWave™ "A" "B" "C" antennas come with a "pigtail" connection, which provides a one-piece weatherproof-cable factory sealed to the antenna in 10 ft. (3 m), 15 ft. (4.6 m), and 25 ft. (7.6 m) lengths respectively. The all-welded design of MDS ClearWave™ Yagi antennas utilize high strength 6061-T6 aluminum to withstand heavy ice, high wind and other extreme weather conditions. The Teflon impregnated powder coat finish provides superior corrosion resistance in all conditions and helps reduce ice loading. Each antenna comes complete with a heavy duty bracket, which easily permits vertical or horizontal polarization.

Why consider an MDS ClearWave Antenna solution?

High system performance and data integrity! Through robust design and construction, MDS ClearWave™ Antennas are optimized for MDS Wireless Networking systems.

Flexibility and rapid installation! Quick return on investment due to simple installation. These antenna products are designed for optimum installation efficiency.

Performance under the most adverse conditions! Exceptional design provides excellent performance in the face of interference or difficult signal paths.

Convenient System Ordering! GE MDS offers one stop shopping — one product order covers both our radios and the appropriate antennas.



MDS ClearWave™ Antennas Ordering & Specifications

Yagi Antennas

Part Number	Freq. (MHz)	No. of Elements	Gain (dBd)	Antenna Connector / Cable
97-3194-A01	406-430	3	6.5	Standard N Female
97-3194-A01A	406-430	3	6.5	10' LMR400 with factory weather sealed N Male
97-3194-A01B	406-430	3	6.5	15' LMR400 with factory weather sealed N Male
97-3194-A01C	406-430	3	6.5	25' LMR400 with factory weather sealed N Male
97-3194-A02	406-430	6	10	Standard N Female
97-3194-A02A	406-430	6	10	10' LMR400 with factory weather sealed N Male
97-3194-A02B	406-430	6	10	15' LMR400 with factory weather sealed N Male
97-3194-A02C	406-430	6	10	25' LMR400 with factory weather sealed N Male
97-3194-A03	430-450	3	6.5	Standard N Female
97-3194-A03A	430-450	3	6.5	10' LMR400 with factory weather sealed N Male
97-3194-A03B	430-450	3	6.5	15' LMR400 with factory weather sealed N Male
97-3194-A03C	430-450	3	6.5	25' LMR400 with factory weather sealed N Male
97-3194-A04	430-450	6	10	Standard N Female
97-3194-A04A	430-450	6	10	10' LMR400 with factory weather sealed N Male
97-3194-A04B	430-450	6	10	15' LMR400 with factory weather sealed N Male
97-3194-A04C	430-450	6	10	25' LMR400 with factory weather sealed N Male
97-3194-A05	450-470	3	6.5	Standard N Female
97-3194-A05A	450-470	3	6.5	10' LMR400 with factory weather sealed N Male
97-3194-A05B	450-470	3	6.5	15' LMR400 with factory weather sealed N Male
97-3194-A05C	450-470	3	6.5	25' LMR400 with factory weather sealed N Male
97-3194-A06	450-470	6	10	Standard N Female
97-3194-A06A	450-470	6	10	10' LMR400 with factory weather sealed N Male
97-3194-A06B	450-470	6	10	15' LMR400 with factory weather sealed N Male
97-3194-A06C	450-470	6	10	25' LMR400 with factory weather sealed N Male
97-3194-A13	902-960	3	6.4	Standard N Female
97-3194-A13A	902-960	3	6.4	10' LMR400 with factory weather sealed N Male
97-3194-A13B	902-960	3	6.4	15' LMR400 with factory weather sealed N Male
97-3194-A13C	902-960	3	6.4	25' LMR400 with factory weather sealed N Male
97-3194-A14	902-960	6	10	Standard N Female
97-3194-A14A	902-960	6	10	10' LMR400 with factory weather sealed N Male
97-3194-A14B	902-960	6	10	15' LMR400 with factory weather sealed N Male
97-3194-A14C	902-960	6	10	25' LMR400 with factory weather sealed N Male

Additional Specifications

- Bandwidth VSWR 1.5 400 MHz: ≥38 MHz
- Bandwidth VSWR 1.5 900 MHz: 58 MHz
- Power Rating: 150 Watts
- Lightning Protection: DC grounded boom and non-driven elements*
- Standard Antenna Connector Type: N Female
- A, B, or C Antenna Connector Type: N Male
- Front to Back Ratio: ≥15 dB
- Wind Loading:
 - 400 MHz: 200 mph wind, 110 mph with 0.5" radial ice
 - 900 MHz: 200 mph wind, 160 mph with 0.5" radial ice

Mounting Information

- A mounting bracket complete with hardware is supplied to mount the antenna on a 1.5" to 2.5" diameter mast. Allows for vertical or horizontal polarization.
- Other frequencies available.
- Warranty 2 full years.

Omni Antennas

Part Number	Freq. (MHz)	Omnidirectional N male 16" jumper	Vertical Beam Width	Height	Weight
97-3194A16	902-928	5 dBd	27°	48"	1.75 lb.
97-3194A17	902-928	7 dBd	17°	96"	4 lb.
97-3194A18	406-430	5 dBd	22°	71"	4 lb.
97-3194A19	430-450	5 dBd	27°	71"	4 lb.
97-3194A20	450-470	5 dBd	27°	71"	4 lb.
97-3194A21	890-960	3 dBd	40°	26"	1.25 lb.
97-3194A22	890-960	5 dBd	27°	48"	1.75 lb.
97-3194A23	928-960	7 dBd	17°	96"	4 lb.

Additional Specifications

- Power Rating: 250 Watts
- Lightning Protection: DC grounded boom and non-driven elements*
- Wind Loading: 100 mph
- White fiberglass radome

Mounting Information

- A pipe mount that can attach up to a 2.5" pipe (3" OD) is supplied. The antennas are all fiberglass enclosed with a white radome.
- Warranty 2 full years

* for maximum protection, system requires surge/lightning protection with center conductor DC grounding.



GE MDS
 175 Science Parkway
 Rochester, New York 14620, USA
 Phone (585) 242-9600
 Fax (585) 242-9620
 www.gemds.com

GE MDS products are manufactured under a quality system certified to ISO 9001. GE MDS reserves the right to make changes to specifications of products described in this data sheet at any time without notice and without obligation to notify any person of such changes.

© 2002 MDS Inc. (Part No. CW Antenna SL0086 Rev. K, 03-07-07)