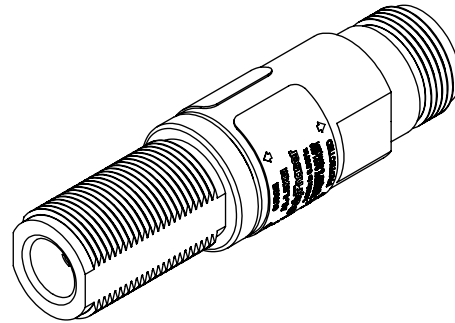


REVISIONS				
REV.	DESCRIPTION	ECN	DATE	APPROVED
D	REFER TO ECN	11900		
E	CHANGE TO IP67	11988	9/5/2013	



MAXIMUM CHARACTERISTICS

APPLICATION:
BULKHEAD MOUNT/ALUMINUM CONSTRUCTION
WEATHERPROOF WHEN INSTALLED

SURGE:
10kA IEC 61000-4-5 8/20μs WAVEFORM

FREQUENCY RANGES:
2.0GHz TO 6.0GHz

VSWR:
≤1.2 TO 1 TYPICAL (≤1.3 TO 1 MAX.)

INSERTION LOSS:
≤0.1dB TYPICAL (≤0.2dB MAX.)

RETURN LOSS:
≥20dB TYPICAL

CONTINUOUS POWER:
10W

LET THROUGH VOLTAGE:
±3 VOLTS FOR 3kA @ 8/20μs WAVEFORM

THROUGHPUT ENERGY:
≤0.5μJ FOR 3kA @ 8/20μs WAVEFORM

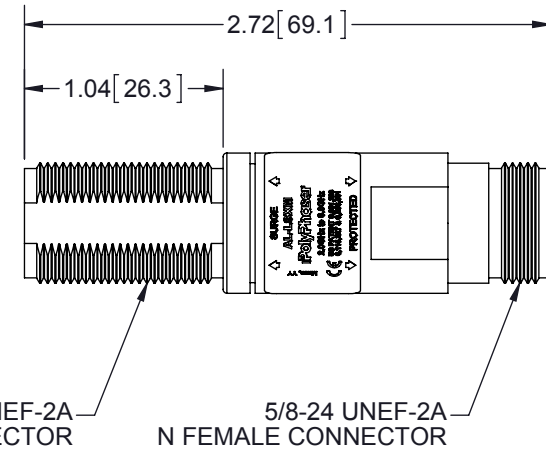
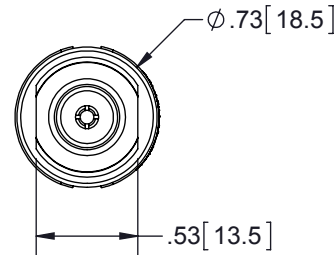
TEMPERATURE:
-40°C TO +85°C STORAGE/OPERATING

VIBRATION:
1G AT 5Hz TO 100Hz

ENVIRONMENTAL:
MEETS IEC 60529 IP67 (E)
MEETS BELLCORE #TA-NWT-000487
PROCEDURE 4.11, WIND DRIVEN (120MPH)
RAIN INTRUSION TEST

MATERIAL:
BODY: 7075 ALUMINUM
CENTER PINS: BRASS OR BERYLLIUM COPPER
GOLD PLATED PER MIL-G-45204
TYPE II, GRADE C, CLASS I

CE COMPLIANT
RoHS COMPLIANT



5/8-24 UNEF-2A
ELONGATED N FEMALE CONNECTOR

5/8-24 UNEF-2A
N FEMALE CONNECTOR

CUSTOMER APPROVAL: _____ DATE: _____

ALL DIMENSIONS SHOWN ARE FOR REFERENCE ONLY.

<small>UNLESS OTHERWISE SPECIFIED LEADING DIMENSIONS ARE INCHES DIMENSIONS IN [] ARE MILLIMETERS</small> <small>TOLERANCES: FRACTIONS=± 1/32 .XX=± .03 ANGLES=± 1° .XXX=± .010</small> <small>NOTICE: THE INFORMATION AND DESIGN IN THIS DOCUMENT IS THE PROPERTY OF POLYPHASER CORPORATION. ALL RIGHTS RESERVED.</small> <small>THIRD-ANGLE PROJECTION</small> 	<small>DRAWN</small> R. DUNNING <small>ENG APPD</small> J. JONES <small>PRODUCT MGR</small> S. DOTTER <small>MARKETING APPD</small> L. JACQUES <small>PROJECT NO.</small>	<small>DATE</small> 5/16/03 5/16/03 5/16/03 5/16/03			<small>SHEET</small> 1 OF 1 <small>SCALE</small> 1:1	
	<small>TITLE</small> LOOP FILTER 2-6GHz 10W <small>CUSTOMER SPECIFICATION</small>					
	<small>DOCUMENT NAME</small> AL-LSXM-C	<small>SIZE</small> A	<small>CAGE</small> 61114	<small>PROD CAT</small> RFP	<small>PART NUMBER</small> AL-LSXM	<small>REV</small> E

THESE COMMODITIES, TECHNOLOGY OR SOFTWARE WERE EXPORTED FROM THE UNITED STATES IN ACCORDANCE WITH THE EXPORT ADMINISTRATION REGULATIONS. DIVERSION CONTRARY TO U.S. LAW PROHIBITED.