

Cradlepoint Multi-Band Omni-Directional Outdoor Antenna (170668-000)

Package Contents:

- 1 – Multi-Band Omni-Directional Antenna with integrated bracket
- 1 – U-bolt assembly



BAND	Frequency (MHz)	GAIN (dBi)
LTE	698 - 803	3.38
GSM 850	824 - 894	2.22
GSM 900	880 - 960	1.44
DCS	1710 - 1880	5.57
PCS	1850 - 1990	2.49
UMTS1	1920 - 2170	2.64
LTE 2600	2490 - 2700	3.06



This antenna requires a cable to connect to a Cradlepoint router. Order at <https://www.jefatech.com/cradlepoint> or call 888-467-2258

Cradlepoint to External Antenna Cable - SMA Male to N Male - Low Loss 400 FLEX
SKU: CA-400F-NM-SMA-L (L= cable length in feet)

Mounting:

Installing and mounting the 170668-000 antenna is relatively straightforward. Be sure the antenna is mounted vertically with the cable connector towards the ground.

Mounting Option 1: Using the included u-bolt, install onto a pole, Universal Mount (UM) or Wall Mount Bracket (WMB) (pictured).

Mounting Option 2: Using screws (not supplied) attach the antenna bracket directly against a flat surface. In this configuration, the u bolt is not used.

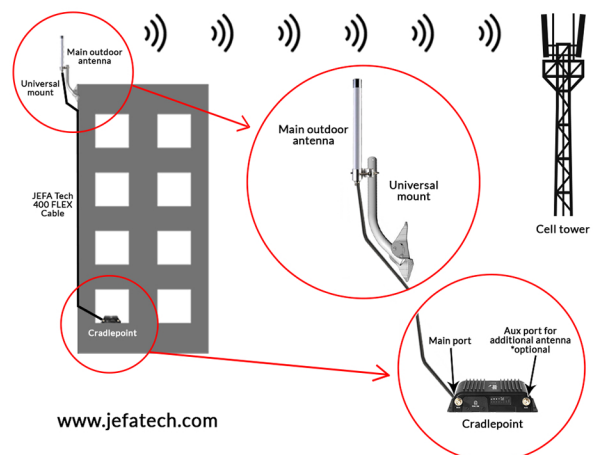


Cable installation:

Attach the cable to the connector as shown. Hand tighten. Do not use a tool to tighten or you will damage the internals of the connector.

Wrap the connector and 3 inches down the cable with the included cable seal strip, or COAX-SEAL.

Add some support to the cable by attaching it to a nearby structure until it enters the building. Do not let the cable hang down on its own weight. This will put stress on the cable and eventually break the internal connection.



www.jefatech.com

Cabling, mounts, lightning protectors, and related accessories are available from JEFA Tech
<https://www.jefatech.com/cradlepoint> or call 888-467-2258