

TELETRONICS INTERNATIONAL

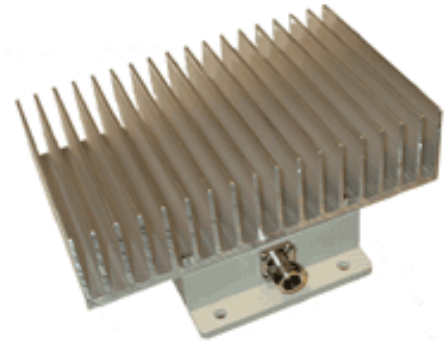
# 12-104 SmartAmp

## 900 MHz 20W Version

### Feature

Designed for extending the range of 900 MHz wireless radio devices, the SmartAmp is particularly effective when used with Direct Sequence or Frequency Hopping Spread Spectrum radios.

Full output power of 20W is achieved with only 32 mW input to the amplifier. Above 32 mW input, the SmartAmp attenuates the input signal power and maintains the output power typically at 20W.



### Specifications

Operating Range: 902-928 MHz  
Operating Mode: Bi directional  
Lightening Protection: Direct DC ground at antenna  
DC Surge Protection: 600Watts TVS @ 15 VDC

### Mechanical & Environmental

Operating Temperature: -30 °C to +70 °C  
Power: <4A @ 15 VDC (100% duty cycle)  
Dimensions  
Amplifier: 7.5" L X 6.0" W X 3.0"H  
DC Injector: 4.53" L X 2.56" W X 1.18" H  
Weight  
Amplifier: 2.8 lb  
DC injector: 0.6 lb  
RF Connector: N Female  
Automatic Gain Control: Yes

### Transmitter Amplifier

Transmit Gain: up to 28 dB (33dB available)  
Transmit output power: max of 20W(43dBm)  
Transmit input power: 32 mW min  
1W max

### Receiver Amplifier

Receive Gain: 12 dB typical  
Frequency Response: +/- 0.75 dB over operating range  
Noise Figure: 3.5 dB approximate

Patents Pending

Copyright © 2003 by Teletronics International Inc. - All rights reserved

### Teletronics International Inc.

1803 Research Blvd. Suite 404 · Rockville · MD · 20850

Phone: 301-309-8500 · Fax: 301-309-8851 · Email: sales@teletronics.com · www.teletronics.com