

TELETRONICS INTERNATIONAL

12-103 SmartAmp

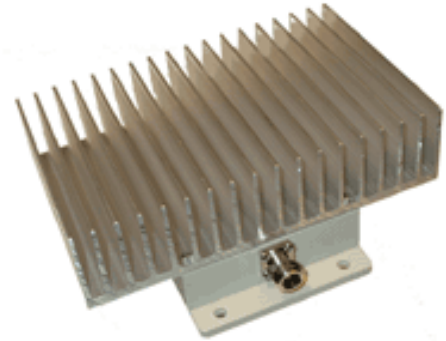
900 MHz 10W

Version

Feature

Designed for extending the range of 900 MHz wireless radio devices, the SmartAmp is particularly effective when used with Direct Sequence or Frequency Hopping Spread Spectrum.

Full output power of 10 W is achieved with only 16 mW input to the amplifier. Above 16 mW input, the SmartAmp attenuates the input signal power and maintains the output power typically at 10W.



Specifications

Operating Range: 902-928 MHz
Operating Mode: Bi directional
Lightening Protection: Direct DC ground at antenna
DC Surge Protection: 600Watts TVS @ 12 VDC

Mechanical & Environmental

Operating Temperature: -30 °C to +70 °C
Power: <3.24A @ 12 VDC (100% duty cycle)
Dimensions
Amplifier: 7.5" L X 6.0" W X 3.0"H
DC Injector: 4.53" L X 2.56" W X 1.18" H
Weight
Amplifier: 2.8 lb
DC injector: 0.6 lb
RF Connector: N Female
Automatic Gain Control: Yes

Transmitter Amplifier

Transmit Gain: up to 28 dB (33dB available)
Transmit output power: max of 10W(40dBm)
Transmit input power: 16 mW min 1W max

Receiver Amplifier

Receive Gain: 12 dB typical
Frequency Response: +/- 0.75 dB over operating range
Noise Figure: 3.5 dB approximate

Patents Pending

Copyright © 2003 by Teletronics International Inc. - All rights reserved

Teletronics International Inc.

1803 Research Blvd. Suite 404 · Rockville · MD · 20850

Phone: 301-309-8500 · Fax: 301-309-8851 · Email: sales@teletronics.com · www.teletronics.com